



# Pacoima Wash Flowing Forward:

## How to Sustain a Community Vision

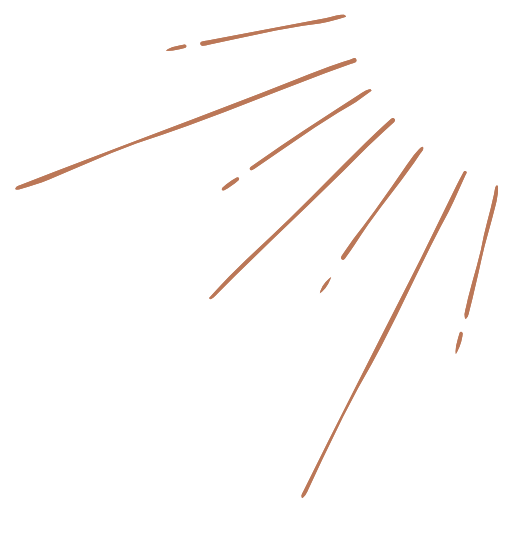
September 19, 2023

Roxy Rivas, Project Manager



Pacoima  
Beautiful





**I want you to close your eyes and think of one of your favorite public places of respite and ask yourself:**

Why do I love to come here?

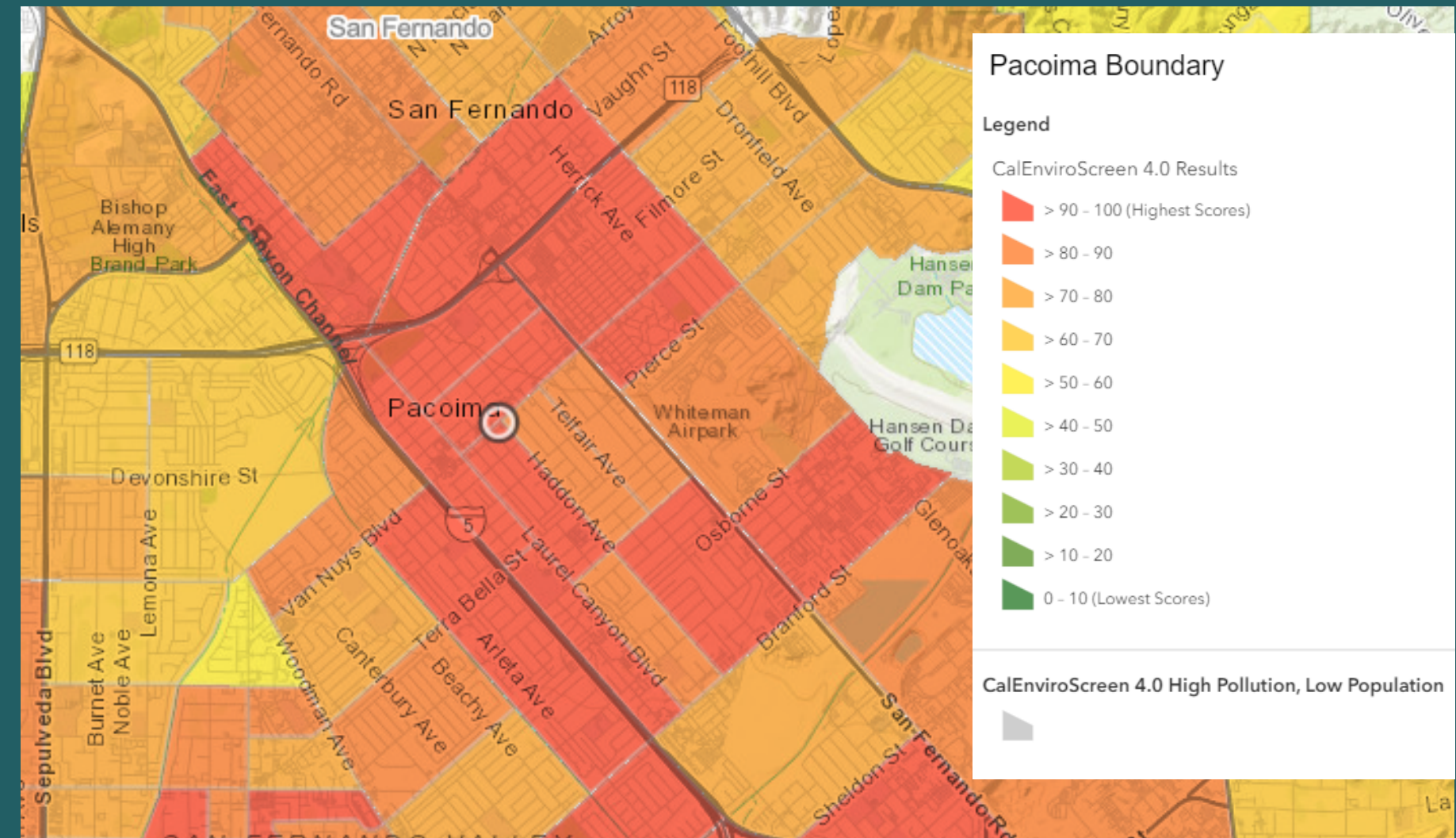
What does this place have that makes it so great?

What makes it a place to recharge?



- **Environmental Justice**

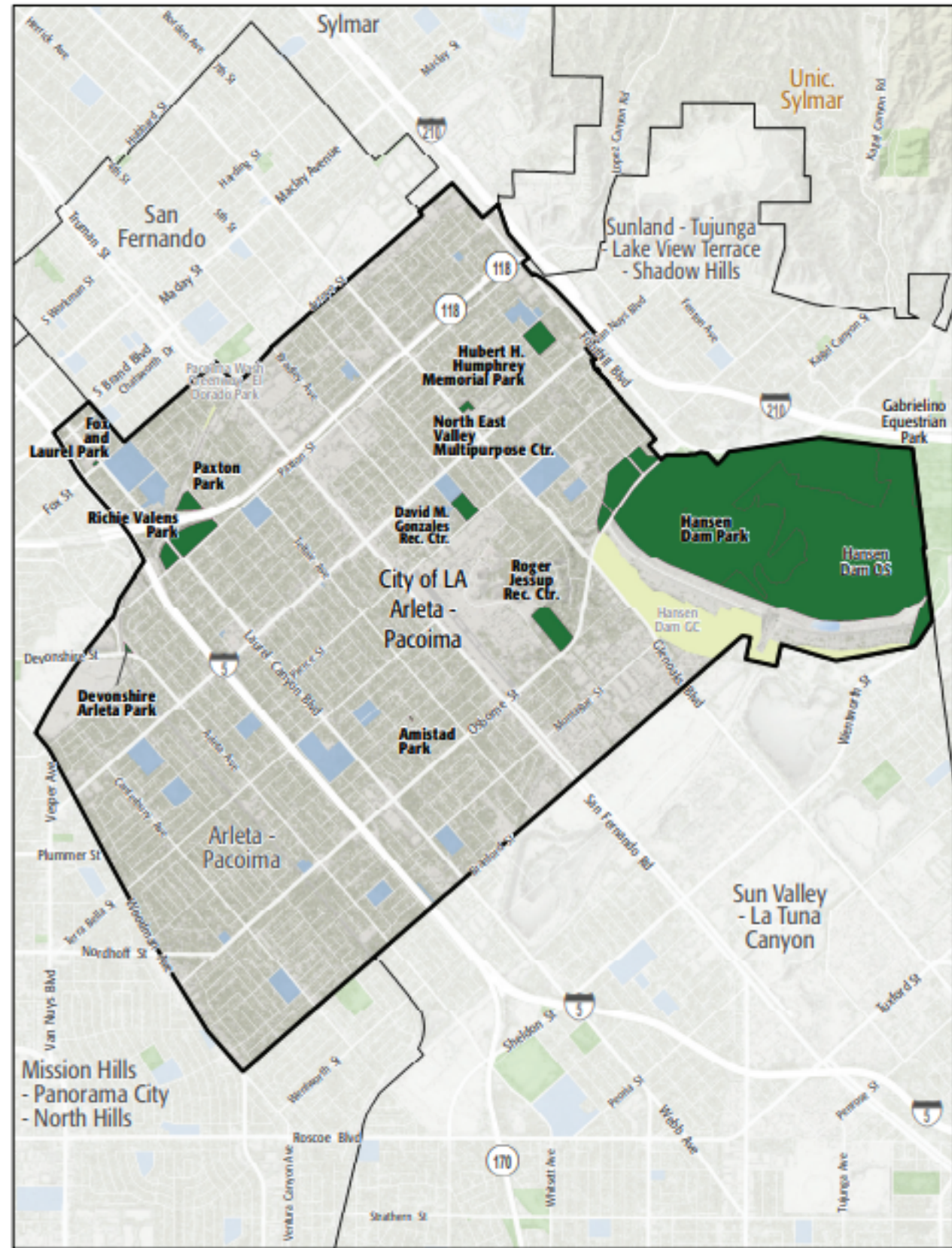
- Asthma Rates are High
- Surrounded by the 210, I-5, and 118 freeways
- Whiteman Airport in the middle of the community
- Cal Enviro Screen 4.0 scores us in the 90th percentile



Source: Cal Enviro Screen 4.0

<https://oehha.ca.gov/calenviroscreen/report/calenviroscreen-40>

# STUDY AREA BASE MAP



City of LA Arleta - Pacoima

- Existing Park
- Existing Park Outside Study Area
- Existing School
- Other Open Space

Source: Parks Needs Assessment 2016

## PARK METRICS



**PARK LAND:** Is there enough park land for the population?

**61.5** PARK ACRES within study area | **105,696** POPULATION | **0.6** PARK ACRES PER 1,000

**419.6** REGIONAL PARK ACRES within study area | **4** REGIONAL PARK ACRES PER 1,000

The county average is 3.3 park acres per 1,000

**PARK ACCESSIBILITY:**  
Is park land located where everyone can access it?

**37%** of population living WITHIN 1/2 MILE of a park  
The county average is 49% of the population living within 1/2 mile of a park

Source: Parks Needs Assessment 2016

### AVAILABLE RECREATIONAL SPACE (ACRES PER 1,000 POPULATION)

LOS ANGELES CITY COUNCIL DISTRICT 7	<b>2.76</b>
BEST PERFORMING CITY OR COMMUNITY	<b>53.32</b>
LOS ANGELES COUNTY	<b>8.10</b>

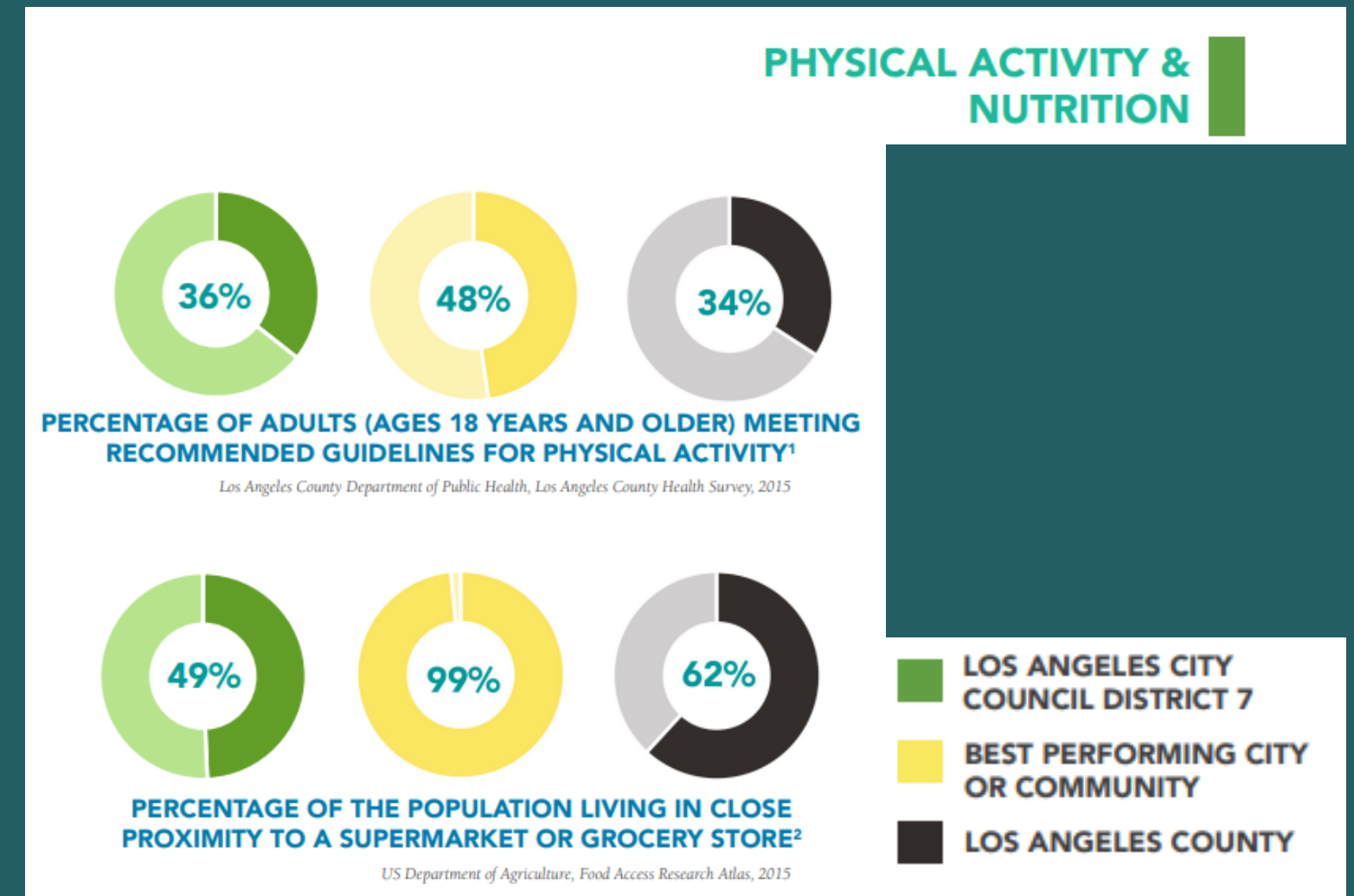
Los Angeles County Geographic Information Systems Data Portal, Los Angeles County Land Types, 2015; Hedderson Demographic Services, Population Estimates, 2015



Source: JUNE 2018  
LOS ANGELES COUNTY LOS ANGELES CITY COUNCIL DISTRICT 7

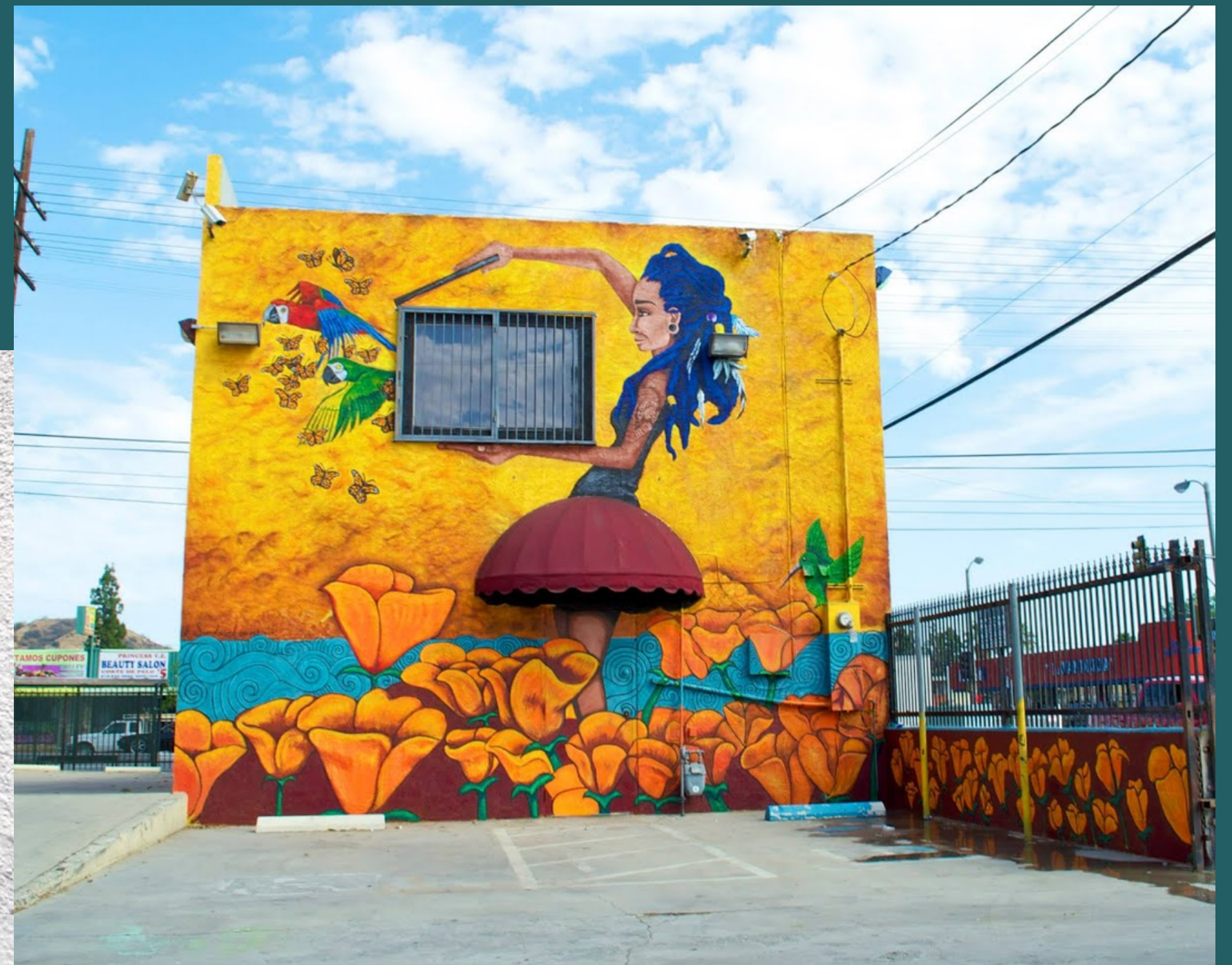
## • Public Health

- people are not getting the recommended exercise they need
- limited access to a supermarket or grocery store means that they are not eating as healthy as they should
- over concentration of fast food restaurants



Source: JUNE 2018  
LOS ANGELES COUNTY LOS  
ANGELES CITY COUNCIL  
DISTRICT 7

- Arts and Culture “Mural Mile”

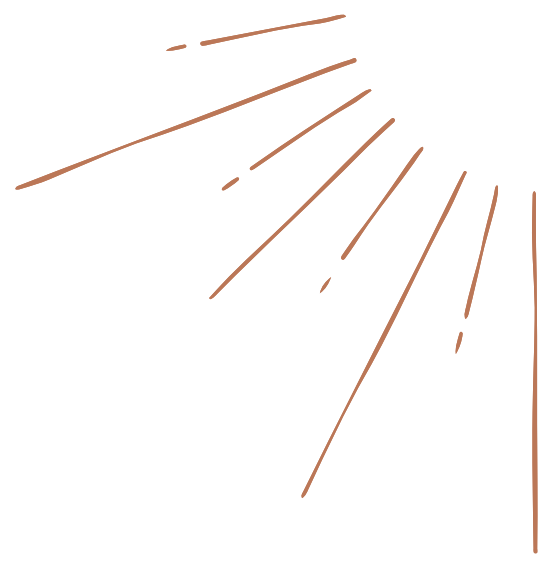


CREATIVE DIRECTOR - Kristy Sandoval

- Plan funded through the Los Angeles County Department of Public Health in 2008
- Co-created with community
- Completed in 2011 to imagine the Pacoima Wash into a multi-purpose greenway for the Northeast San Fernando Valley



# Vision Plan Goals



- Promote Community health by creating connections that provide active living opportunities
- Develop multi-purpose greenway and expand park space
- Protect, enhance, and restore the Pacoima Wash as a natural area
- Improve water quality
- Maintain or improve existing levels of flood protection







San Gabriel Mountains

Angeles National Forest

Lopez Dam

Sylmar Segment

San Fernando Segment

Pacoima Segment

Hansen Dam

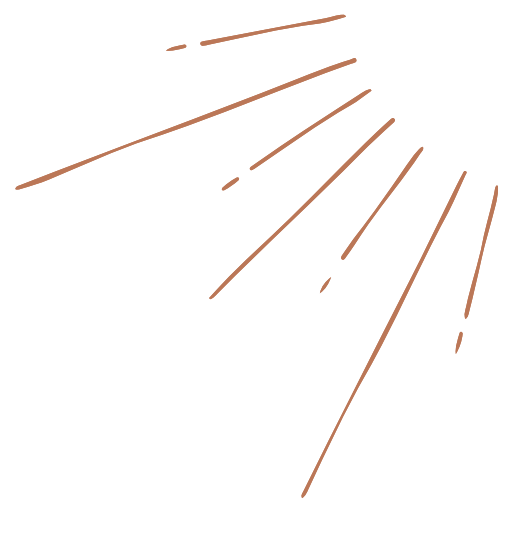
Spreading Grounds

5 Freeway

178 Freeway

210 Freeway

# PB's Outreach Work

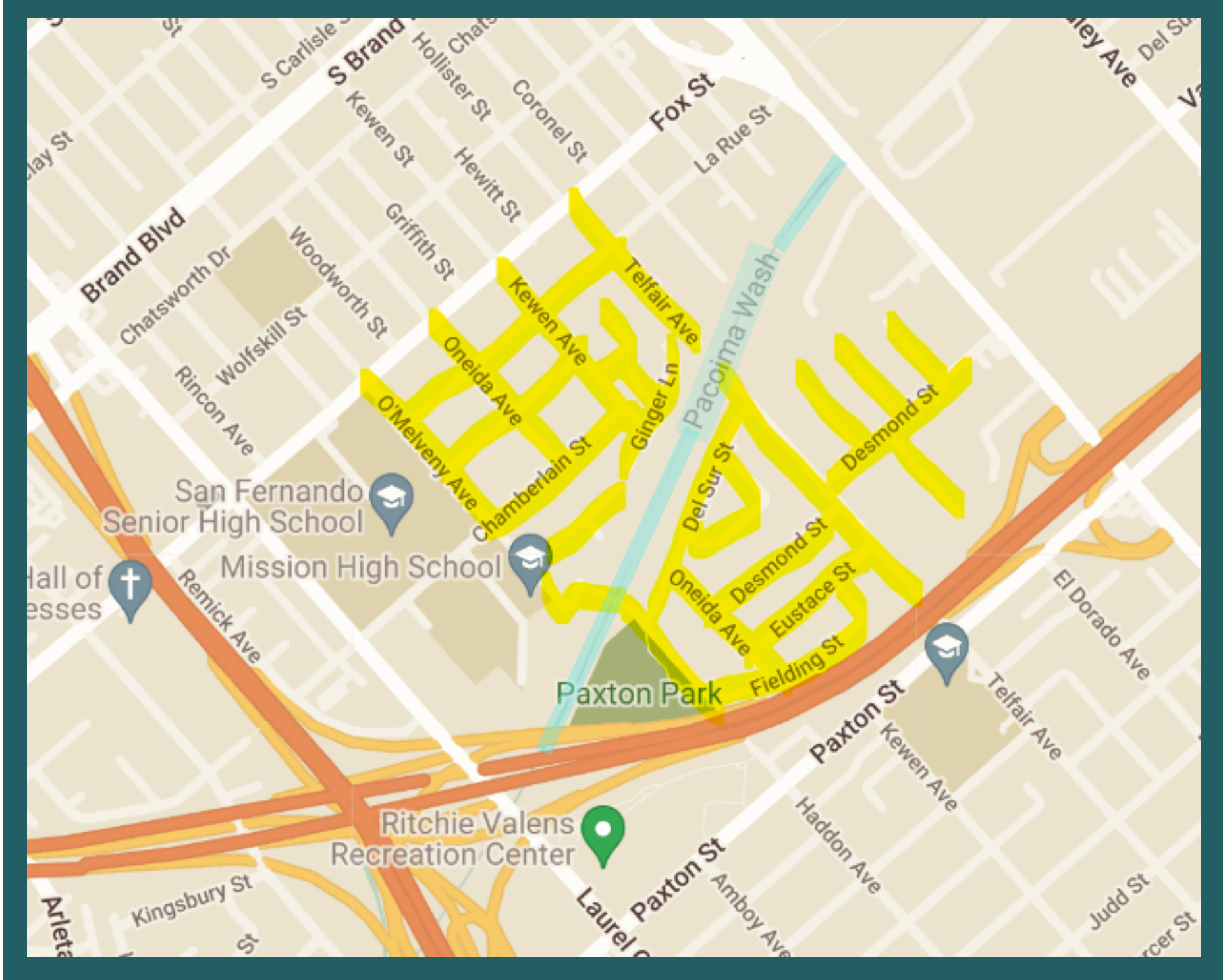
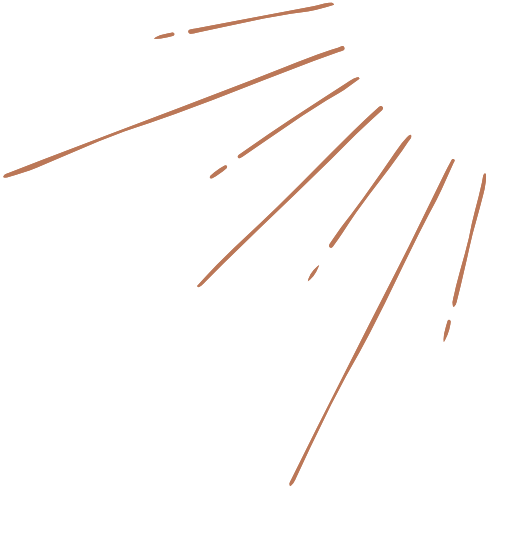


Stakeholders:

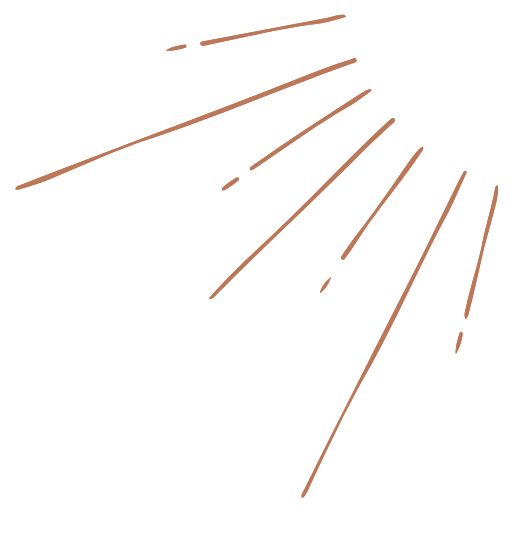
Residents who live directly near the Wash	Door-to-door canvassing, surveys, design meetings
Students	San Fernando High School focus groups, presentations, surveys
Park users	surveys, design meetings, tabling events
Bridge users	Pedestrian Bridge counts



# Outreach Area



# Community Concerns

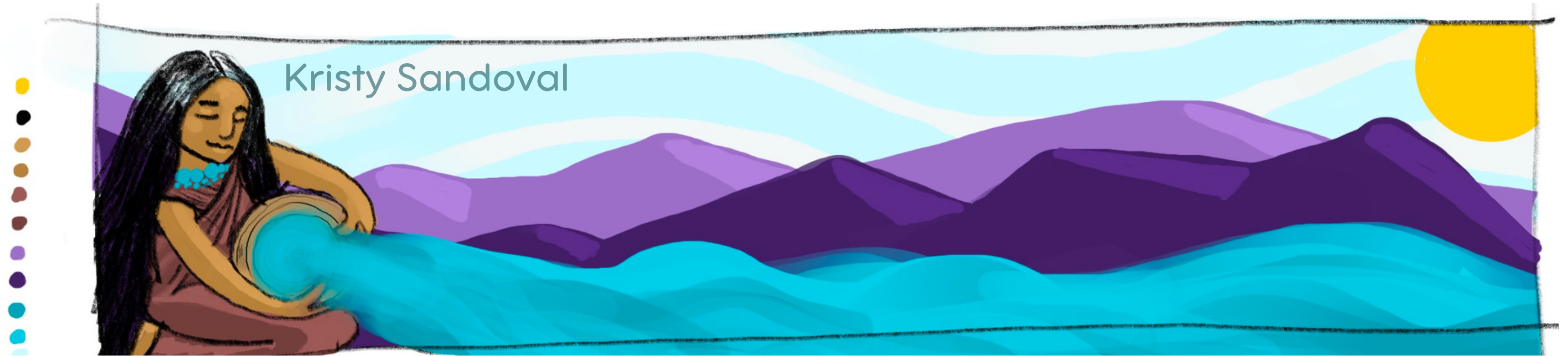


	Areas of concern	Outreach	Community Feedback
Elements	Roads, Trash	Survey, Interview	"The road needs renovations"
People	Unhoused Population	Survey, Interview, Observations	"There are so many unhoused folks by the bridge"
Safety	Graffiti, Lights, Safety	Survey, Interview	"When it's dark, it doesn't feel safe"

# Mural Ideas



# Mural Ideas



Description: Tatarian woman pouring water out that will flow from the wall onto the cemented ground on the pathway continuing into the bridge. This image would be duplicated on both sides.

# Case Study Takeaways



Start community engagement EARLY. This should be the priority before any design happens.



Pay local experts or CBOs to support engagement. They are needed on projects just as much as an architect or engineer.



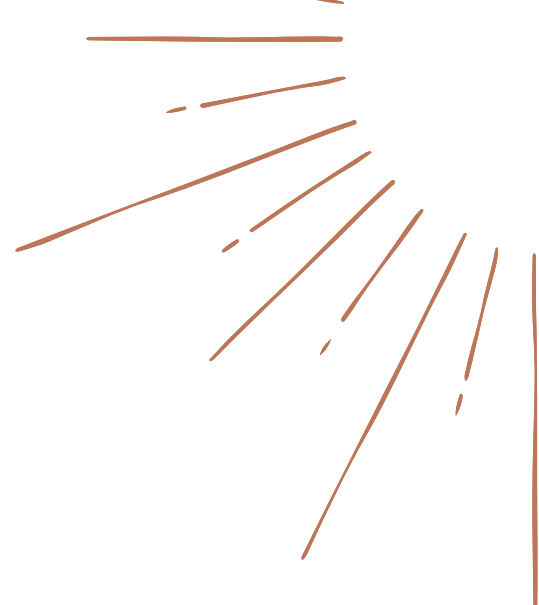
Build relationships with the community. Focus on social infrastructure just as much as built infrastructure.



Be upfront about the constraints of a project. Frequent and active communication is key.



Develop a long-standing stewardship plan for a site. The community lives with it after you are done - make sure they have support.



Thank you!

Contact:

**Roxy Rivas**

[rrivas@pacoimabeautiful.org](mailto:rrivas@pacoimabeautiful.org)

