

Los Angeles County Water Plan

2023 State of the LA River Watershed
September 19, 2023

LA COUNTY
WATER PLAN

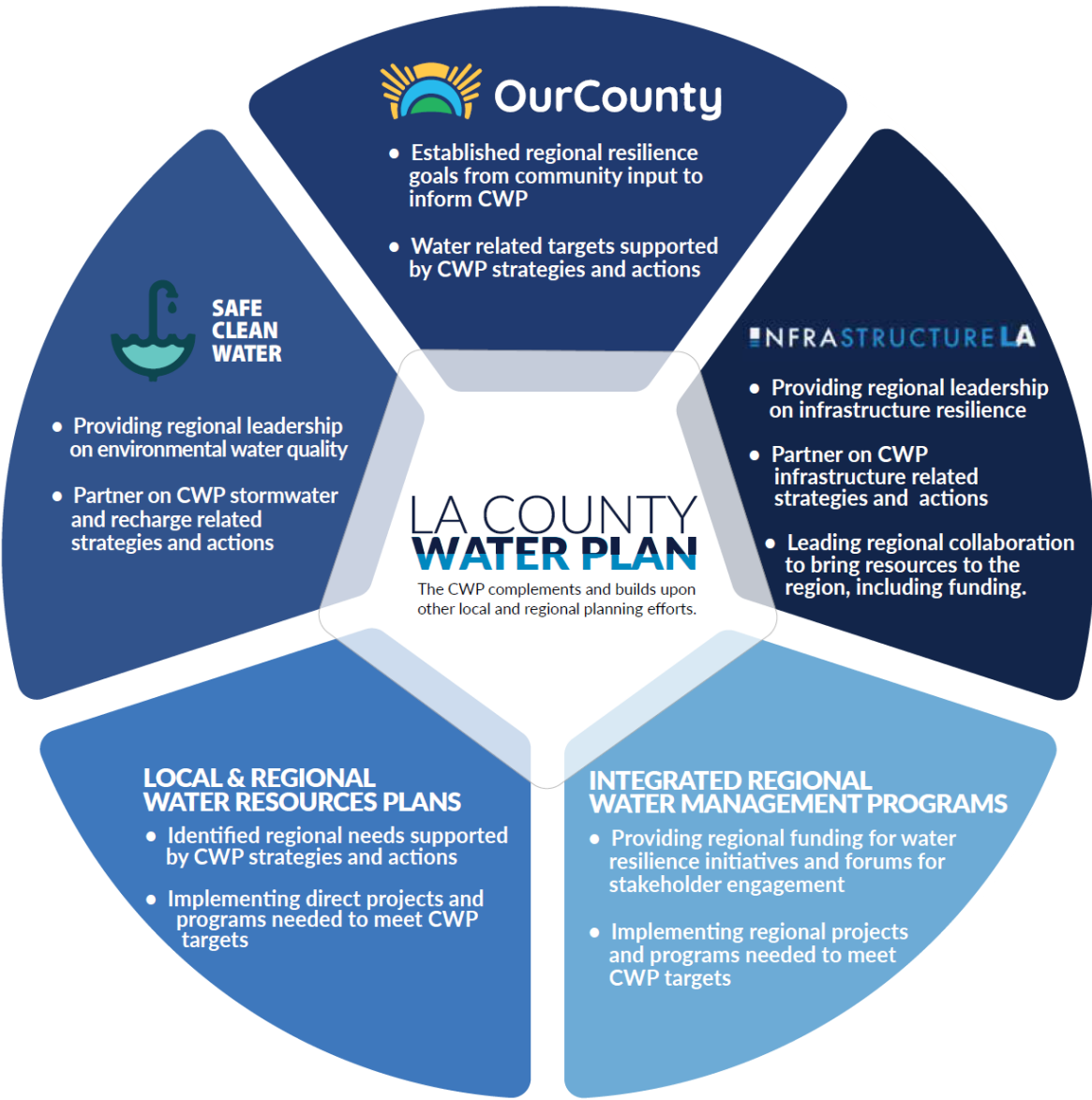


Vision

An aerial photograph of a long, straight water canal stretching across a landscape. The canal is filled with water that reflects the vibrant orange and yellow colors of a sunset sky. The sky is filled with soft, wispy clouds. In the background, a residential area with houses and trees is visible, and further back, a range of mountains can be seen under the twilight sky.

The CWP articulates a shared, inclusive, regional path forward to sustainably achieve safe, clean, and reliable water resources for Los Angeles County.

Complementary



Efforts



Recent County Board Initiatives

Climate-Ready Communities

Examines impacts on vulnerable communities, populations, and infrastructure

Anti-Racism, Diversity & Inclusion (ARDI) Initiative

Articulates an anti-racist agenda that guides, governs, and increases the County's ongoing commitment to fighting racism

Equity in Infrastructure Initiative

Identifies and reduces disparities across geographies produced in the planning, delivery, and distribution of investments and services

Regional Collaboration




LA COUNTY
WATER PLAN



Development Process



A Living Document




CHAPTER 1 ACHIEVING REGIONAL WATER RESILIENCE THROUGH COLLABORATION

The Los Angeles County Water Plan (CWP) focuses on achieving countywide water resilience through collaborative strategies. Over 200 agencies manage a complex network of water systems to meet the needs of our communities and environment. Cross-sector teamwork and a holistic approach to best leverage natural and engineered systems are essential to achieve safe, clean, and reliable water resources for the present and future generations of Los Angeles County. This chapter provides the vision for the CWP, along with an overview of the CWP development process and outcomes.

VISION
The CWP articulates a shared, inclusive, regional path forward to sustainably achieve safe, clean, and reliable water resources for Los Angeles County.

10 | W A T E R P L A N

Vision



CHAPTER 2 TARGETS FOR A RESILIENT WATER FUTURE

CWP targets reflect shared desired outcomes for regional water resilience across Los Angeles County by 2045. Meeting these targets requires successful implementation of both local and regional efforts, projects, and programs, including many efforts led outside of the CWP. Guided by implementable two-year action plans, CWP strategies and actions will support progress towards targets. The targets were developed to enable future progress tracking that leverages existing and easily reportable data sources in addition to any new information on benefits provided by stakeholder projects.


Targets that are meaningful and measurable were intentionally selected for the CWP. The resulting targets within each of the four focal areas are presented in this chapter with corresponding metrics and background context. Further details as to how each individual target was developed and how it will be tracked are included in Appendix B.

When stakeholders were asked their desired outcomes for future water resilience, some examples they gave were:

- “Equity, affordability and resilience”
- “Ability to withstand droughts”
- “Better connectivity between isolated systems”
- “Reduce fire-related damage”
- “Understanding of opportunities for partnerships”
- “Regional forum to discuss common concerns, issues, opportunities”

18 | W A T E R P L A N

Targets




CHAPTER 3 STRATEGIES AND ACTIONS FOR A RESILIENT WATER FUTURE

Fourteen CWP strategies have been developed to capitalize on the opportunities identified for further regional collaboration to meet the shared CWP targets. Each strategy presented in this chapter is supported by a suite of detailed actions that will be facilitated throughout CWP implementation. The strategies and actions are aligned with the CWP values which include ensuring inclusive, diverse, multigenerational, and sustained community engagement and ensuring the CWP is actionable and adaptable. A table showing the alignment between CWP targets and strategies is provided at the end of this chapter. Collectively, these strategies and actions will help to meet multiple targets both directly and indirectly by leveraging resources across Los Angeles County that support and complement existing local and regional water resilience efforts, projects, and programs. These complementary and supported planning efforts are acknowledged in Appendix C.

Many of these strategies and actions will take time to fully realize but will provide immediate and interim benefits along the way. By continually identifying and taking near-term steps, we will facilitate consistent progress on targets, strategies, and actions. A two-year Action Plan, which identifies the steps and resources needed to implement actions within the current two-year period is included as Appendix A.


24 | W A T E R P L A N

Strategies & Actions



CHAPTER 4 WORKING TOGETHER FOR A RESILIENT WATER FUTURE

The CWP is more than this initial document - it is a dynamic planning process rooted in the spirit of fostering ongoing regional collaboration. Our values, including considering equitable benefits and impacts of water resource management decisions, will continue to drive our progress. The success of this planning effort will continue to involve many water management entities and stakeholders working together, with facilitation by Public Works, to realize our shared vision for future water resilience.



56 | W A T E R P L A N

Implementation

Plan Elements

Targets

- Provide a metric to measure and track progress implementing the CWP

Strategies

- Provide the regional, collaborative approaches to achieving the targets

Actions

- Specific steps to support the strategies
- Action Plan: Near-term implementation plan to be revised every two years

4 Key Focal Areas + 16 Targets

REGIONAL WATER
SUPPLY RELIABILITY



A B C D

GROUNDWATER
MANAGEMENT AND
QUALITY



E F G H

SMALL, AT-RISK SYSTEM
RESILIENCE AND DRINKING
WATER EQUITY



I J K L

WATERSHED
SEDIMENT MANAGEMENT



M N O P

Targets

Let's Take A Look ► Target B

B

Increase local supply sources by 580,000
AFY

Metric: Total water supply that is sourced
within Los Angeles County

14 Strategies



STRATEGY 1

Achieving the most efficient water use possible countywide



STRATEGY 5

Leveraging regional groundwater storage potential



STRATEGY 9

Facilitating regional groundwater recharge understanding and initiatives



STRATEGY 13

Managing invasive species in riparian areas



STRATEGY 2

Collaborating on consistent drought preparedness and response messaging



STRATEGY 6

Collaborating on water quality needs and treatment technologies



STRATEGY 10

Facilitating natural infiltration of precipitation



STRATEGY 14

Facilitating sediment management and debris removal from flood control facilities



STRATEGY 3

Coupling local supply development with regional conveyance



STRATEGY 7

Enhancing cost-effectiveness of pumping and treating impaired groundwater production



STRATEGY 11

Providing regional support for small, at-risk water systems



STRATEGY 4

Managing salt and concentrate regionally



STRATEGY 8

Protecting coastal groundwater basins from seawater intrusion



STRATEGY 12

Mitigating wildfire effects on water supply and quality

Let's Take A Look ► Target B



STRATEGY 1

Achieving the most efficient water use possible countywide



STRATEGY 5

Leveraging regional groundwater storage potential



STRATEGY 9

Facilitating regional groundwater recharge understanding and initiatives



STRATEGY 13

Managing invasive species in riparian areas



STRATEGY 2

Collaborating on consistent drought preparedness and response messaging



STRATEGY 6

Collaborating on water quality needs and treatment technologies



STRATEGY 10

Facilitating natural infiltration of precipitation



STRATEGY 14

Facilitating sediment management and debris removal from flood control facilities



STRATEGY 3

Coupling local supply development with regional conveyance



STRATEGY 7

Enhancing cost-effectiveness of pumping and treating impaired groundwater production



STRATEGY 11

Providing regional support for small, at-risk water systems



STRATEGY 4

Managing salt and concentrate regionally



STRATEGY 8

Protecting coastal groundwater basins from seawater intrusion



STRATEGY 12

Mitigating wildfire effects on water supply and quality

CWP Strategies & Actions
+ Other Local & Regional Efforts

CWP Targets

Advancing Towards Resiliency

August 3, 2023

- Draft CWP Released
- Public Review Starts
- Info Session on CWP

September 18, 2023

- Extended Public Review Finished

Fall 2023

- Review & Incorporate Comments
- Finalize CWP

Late 2023

- Anticipated Board of Supervisors Adoption

**Keep
in touch!**

LACountyWaterPlan.org

LACountyWaterPlan@pw.lacounty.gov

Lee Alexanderson, P.E.

Senior Civil Engineer

LAlexanderson@pw.lacounty.gov

LA COUNTY
WATER PLAN



LACountyWaterPlan.org

