

LANDSCAPING

Lightly

2015 CALENDAR



TIPS AND TECHNIQUES FOR SUSTAINABLE LANDSCAPING

2015

January

1 2 3
4 5 6 7 8 9 10
11 12 13 14 15 16 17
18 19 20 21 22 23 24
25 26 27 28 29 30 31

February

1 2 3 4 5 6 7
8 9 10 11 12 13 14
15 16 17 18 19 20 21
22 23 24 25 26 27 28

March

1 2 3 4 5 6 7
8 9 10 11 12 13 14
15 16 17 18 19 20 21
22 23 24 25 26 27 28
29 30 31

April

1 2 3 4
5 6 7 8 9 10 11
12 13 14 15 16 17 18
19 20 21 22 23 24 25
26 27 28 29 30

May

1 2
3 4 5 6 7 8 9
10 11 12 13 14 15 16
17 18 19 20 21 22 23
24 25 26 27 28 29 30
31

June

1 2 3 4 5 6
7 8 9 10 11 12 13
14 15 16 17 18 19 20
21 22 23 24 25 26 27
28 29 30

July

1 2 3 4
5 6 7 8 9 10 11
12 13 14 15 16 17 18
19 20 21 22 23 24 25
26 27 28 29 30 31

August

1
2 3 4 5 6 7 8
9 10 11 12 13 14 15
16 17 18 19 20 21 22
23 24 25 26 27 28 29
30 31

September

1 2 3 4 5
6 7 8 9 10 11 12
13 14 15 16 17 18 19
20 21 22 23 24 25 26
27 28 29 30

October

1 2 3
4 5 6 7 8 9 10
11 12 13 14 15 16 17
18 19 20 21 22 23 24
25 26 27 28 29 30 31

November

1 2 3 4 5 6 7
8 9 10 11 12 13 14
15 16 17 18 19 20 21
22 23 24 25 26 27 28
29 30

December

1 2 3 4 5
6 7 8 9 10 11 12
13 14 15 16 17 18 19
20 21 22 23 24 25 26
27 28 29 30 31

Dear Friend,

California experienced its worst drought ever recorded in 2014. However, there is good news. By Landscaping Lightly, you can help conserve water and energy and care for the planet. Did you know...

- Replacing your lawn with beautiful, drought-tolerant California native plants can save thousands of gallons of water each month. There are natives that thrive in every site and condition. Plant native plants and the bees, birds and butterflies will come!
- Building water-catching rain gardens into your landscape can prevent runoff from polluting streams and the ocean.

To help inspire you to make small changes in your yard that have big benefits, the Council for Watershed Health, with support from our partners listed below, developed this informative 2015 Landscaping Lightly calendar. Inside you will find fun new illustrations and useful tips, websites, books, and other references to inspire you to create beautiful and sustainable yards and gardens.

We hope you'll make 2015 a year of Landscaping Lightly by putting these inspiring suggestions into practice. Have fun and we wish you all the very best in the year ahead!

Sincerely,



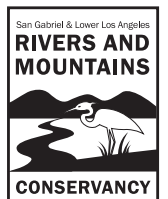
Nancy L.C. Steele, D. Env.
Executive Director | Council for Watershed Health



LOS ANGELES CENTER FOR URBAN
NATURAL RESOURCES SUSTAINABILITY



FUNERALS • CREMATIONS • CEMETERIES



CASH IN YOUR GRASS



WATERWISE GARDENS SAVE WATER AND MONEY

Tips

More than half of potable water is used in your yard. Take advantage of “cash for grass” rebates and replace your lawn with low water California native groundcovers and shrubs. To learn about rebates available in your area visit www.socalwatersmart.com.

Sheet mulching is an effective way to kill stubborn grasses over time. For sheet mulching instructions and videos plus more lawn conversion tips visit bayfriendlycoalition.org/LYL.shtml.

If you must keep a little grass, good low water alternatives include UC Verde buffalograss and Kurapia, or create a native grass meadow and add some native bulbs and wildflowers. For more great plants visit www.plantbook.com.

For more great tips pick up a copy of *Reimagining the California Lawn: Water-conserving Plants, Practices, and Designs*. And when you are ready to pick out your plants, no book provides better information than *Landscape Plants for California Gardens*. Happy planting!

JANUARY 2015

Sunday	Monday	Tuesday	Wednesday	Thursday	Friday	Saturday
DEC 2014 S M T W T F S 1 2 3 4 5 6 7 8 9 10 11 12 13 14 15 16 17 18 19 20 21 22 23 24 25 26 27 28 29 30 31	FEB 2015 S M T W T F S 1 2 3 4 5 6 7 8 9 10 11 12 13 14 15 16 17 18 19 20 21 22 23 24 25 26 27 28			1 New Year's Day	2	3
4	5	6	7	8	9	10
11	12	13	14	15	16	17
18	19 Martin Luther King Jr.'s Birthday	20	21	22	23	24
25	26	27	28	29	30	31



**WORK
WITH WATER
MAKE SURFACES PERMEABLE**

Tips

To minimize the pollution of our rivers and beaches, keep as much rainwater on your property as possible. For a

How-to Guide, List of Rain Barrel Manufacturers, and a Tool Check List, visit www.larainwaterharvesting.org.

Create depressions filled with vegetation or rain gardens, and redirect your downspouts into these areas. A great resource for redesigning your landscape to catch rainfall is Rainwater Harvesting for Drylands and Beyond by Brad Lancaster. It is available at www.harvestingrainwater.com.

Replace concrete with gravel paths and permeable pavement to allow water to soak in. For great examples and sample plans visit www.h2ouse.net.

Sweep brick, pavers, and pavement regularly and keep them clear of weeds to maintain maximum permeability.

Swales, rain gardens, and permeable pavers not only provide environmental benefits, they can add beauty and value to your home.

FEBRUARY 2015

Sunday	Monday	Tuesday	Wednesday	Thursday	Friday	Saturday																																																																																																		
1	2 Groundhog Day	3	4	5	6	7																																																																																																		
8	9	10	11	12	13	14 Valentine's Day																																																																																																		
15	16 President's Day	17	18	19 Chinese New Year	20	21																																																																																																		
22	23	24	25	26	27	28																																																																																																		
					<table border="1"> <thead> <tr> <th colspan="7">JAN 2015</th> <th colspan="7">MAR 2015</th> </tr> <tr> <th>S</th><th>M</th><th>T</th><th>W</th><th>T</th><th>F</th><th>S</th> <th>S</th><th>M</th><th>T</th><th>W</th><th>T</th><th>F</th><th>S</th> </tr> </thead> <tbody> <tr> <td></td><td></td><td></td><td></td><td>1</td><td>2</td><td>3</td> <td>1</td><td>2</td><td>3</td><td>4</td><td>5</td><td>6</td><td>7</td> </tr> <tr> <td>4</td><td>5</td><td>6</td><td>7</td><td>8</td><td>9</td><td>10</td> <td>8</td><td>9</td><td>10</td><td>11</td><td>12</td><td>13</td><td>14</td> </tr> <tr> <td>11</td><td>12</td><td>13</td><td>14</td><td>15</td><td>16</td><td>17</td> <td>15</td><td>16</td><td>17</td><td>18</td><td>19</td><td>20</td><td>21</td> </tr> <tr> <td>18</td><td>19</td><td>20</td><td>21</td><td>22</td><td>23</td><td>24</td> <td>22</td><td>23</td><td>24</td><td>25</td><td>26</td><td>27</td><td>28</td> </tr> <tr> <td>25</td><td>26</td><td>27</td><td>28</td><td>29</td><td>30</td><td>31</td> <td>29</td><td>30</td><td>31</td><td></td><td></td><td></td><td></td> </tr> </tbody> </table>		JAN 2015							MAR 2015							S	M	T	W	T	F	S	S	M	T	W	T	F	S					1	2	3	1	2	3	4	5	6	7	4	5	6	7	8	9	10	8	9	10	11	12	13	14	11	12	13	14	15	16	17	15	16	17	18	19	20	21	18	19	20	21	22	23	24	22	23	24	25	26	27	28	25	26	27	28	29	30	31	29	30	31				
JAN 2015							MAR 2015																																																																																																	
S	M	T	W	T	F	S	S	M	T	W	T	F	S																																																																																											
				1	2	3	1	2	3	4	5	6	7																																																																																											
4	5	6	7	8	9	10	8	9	10	11	12	13	14																																																																																											
11	12	13	14	15	16	17	15	16	17	18	19	20	21																																																																																											
18	19	20	21	22	23	24	22	23	24	25	26	27	28																																																																																											
25	26	27	28	29	30	31	29	30	31																																																																																															

BEES ARE BENEFICIAL



HONEY BEES NEED OUR HELP

Tips

Create spaces for bees. There are over 4,000 species of native bees in North America. Learn about the native bees in your area and help them thrive.

Support your local beekeeper! About one third of all the fruits and vegetables Americans eat is a result of honeybee and native bee pollination. Purchasing honey from local beekeepers supports a local industry and native plant pollination.

More bees results in more fruits and seeds. Bees pollinate garden plants and wildflowers, too. You can support bees by planting native annual and perennial flowering plants.

Make your yard safe for bees. Avoid using pesticides and never spray blooming flowers when bees are visiting. There are many non-toxic, safe alternatives to pesticides. If you must use a pesticide, only apply when there is no wind and only when temperatures are cooler as bees are less active then.

Sponsored by



MARCH 2015

Sunday	Monday	Tuesday	Wednesday	Thursday	Friday	Saturday
1	2	3	4	5	6	7
8	9	10	11	12	13	14
Daylight Savings						
15	16	17	18	19	20	21
		Mardi Gras St. Patrick's Day			First Day of Spring	
22	23	24	25	26	27	28
29	30	31				
		Cesar Chavez Day				
					FEB 2015 S M T W T F S 1 2 3 4 5 6 7 8 9 10 11 12 13 14 15 16 17 18 19 20 21 22 23 24 25 26 27 28	
					APR 2015 S M T W T F S 1 2 3 4 5 6 7 8 9 10 11 12 13 14 15 16 17 18 19 20 21 22 23 24 25 26 27 28 29 30	

WATER WISELY



WATER EARLY AND EFFICIENTLY

Tips

Be smart and reduce your water use by watering in the early morning when evaporation rates are low.

Keep valuable water on your property where it is needed. Mosquitoes thrive in runoff that collects in gutters and underground storm drains, risking public health. Visit the Greater Los Angeles County Vector Control District's website for more information: www.glacvcd.org.

Lawns require significantly more water than most other garden plants. Take part in lawn-to-garden incentive programs where you can receive a rebate for each square foot of lawn you replace. Visit www.socalwatersmart.com for current rebates.

Use weather based irrigation controllers, rotor sprinkler heads, drip and micro-emitters to increase water efficiency and save money.

Use the Watering Index to estimate the amount of water your plants need and set your controller accordingly. This can save hundreds of gallons in the summer months. See the index at: www.bewaterwise.com.

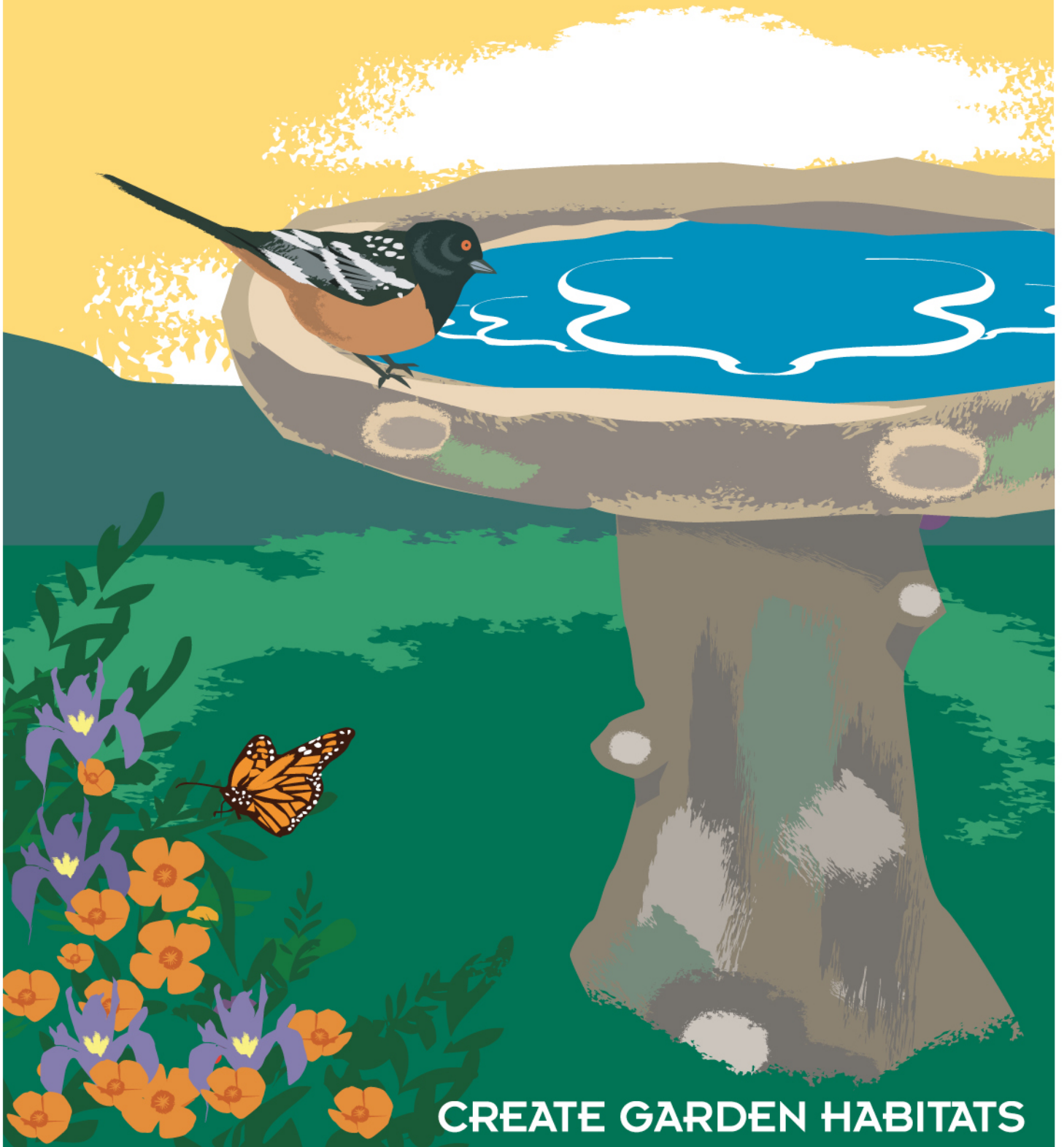


Sponsored by

APRIL 2015

Sunday	Monday	Tuesday	Wednesday	Thursday	Friday	Saturday
MAR 2015 S M T W T F S 1 2 3 4 5 6 7 8 9 10 11 12 13 14 15 16 17 18 19 20 21 22 23 24 25 26 27 28 29 30 31	MAY 2015 S M T W T F S 1 2 3 4 5 6 7 8 9 10 11 12 13 14 15 16 17 18 19 20 21 22 23 24 25 26 27 28 29 30 31		1	2	3	4
5	6	7	April Fool's Day	9	Good Friday First Day of Passover	11
Easter Sunday			8	16	17	18
12	13	14	Tax Day	23	24	25
19	20	21	Earth Day	28	29	
26	27	28	29	30		

INVITE NATURE



CREATE GARDEN HABITATS

Tips

Install water features to attract wildlife. Use a small pump to gently recirculate the water; this will make it inviting for a diversity of birds.

Plant native shrubs like currant, toyon, and coffeeberry and enjoy the bees, butterflies, and berry loving birds that visit.

Honey bees and hummingbirds are attracted to colorful tubular-shaped flowers. Keep them buzzing and humming right along by planting California fuchsias, penstemons, and coral bells.

Harmful pesticides can persist in the environment for a long time. Consider nontoxic alternatives like those found at the following website: www.ipm.ucdavis.edu.

Encourage lizards, frogs, newts, and salamanders by incorporating rocks and logs, raised potted plants, or even a shallow pond into your garden. Your local vector control agency can provide free mosquito-eating fish.

Sponsored by **FOREST LAWN®**
FUNERALS • CREMATIONS • CEMETERIES

MAY 2015

Sunday	Monday	Tuesday	Wednesday	Thursday	Friday	Saturday
APR 2015 S M T W T F S 1 2 3 4 5 6 7 8 9 10 11 12 13 14 15 16 17 18 19 20 21 22 23 24 25 26 27 28 29 30	JUN 2015 S M T W T F S 1 2 3 4 5 6 7 8 9 10 11 12 13 14 15 16 17 18 19 20 21 22 23 24 25 26 27 28 29 30				1	2
3	4	5 Cinco de Mayo	6	7	8	9
10 Mother's Day	11	12	13	14	15	16
17	18	19	20	21	22	23
24	25	26	27	28	29	30
31	Memorial Day					

REUSE YOUR WATER



INSTALL A GREYWATER SYSTEM

Tips

Save water and money by using greywater to irrigate trees, shrubs, groundcovers and flower beds. Greywater is “wash water” from bathroom sinks, showers and washing machines.

Participate in a local workshop to learn about how to set up safe and approved greywater reuse systems. Visit www.greywateraction.org for more information.

Check current California Plumbing Code before moving forward with your plans. Permits are needed for some types of greywater systems.

The current greywater code, Title 24, Part 5, Chapter 16A, Part 1, can be found at www.hcd.ca.gov. Other greywater policy information can be found at www.greywateralliance.org.

Pay special attention to what’s going down the drain! Use only detergents and cleaning products formulated for greywater systems. Your plants will thank you for it!

Sponsored by



JUNE 2015

Sunday	Monday	Tuesday	Wednesday	Thursday	Friday	Saturday
	1	2	3	4	5	6
7	8	9	10	11	12	13
14 Flag Day	15	16	17	18 Ramadan begins	19	20
21 Father's Day First Day of Summer	22	23	24	25	26	27
28	29	30			MAY 2015 S M T W T F S 1 2 3 4 5 6 7 8 9 10 11 12 13 14 15 16 17 18 19 20 21 22 23 24 25 26 27 28 29 30 31	JUL 2015 S M T W T F S 1 2 3 4 5 6 7 8 9 10 11 12 13 14 15 16 17 18 19 20 21 22 23 24 25 26 27 28 29 30 31

INVEST IN TREES



HIRE A CERTIFIED ARBORIST

Tips

Entrust the health and safety of your trees to certified arborists. Pruning or removing trees can be dangerous and should be done only by those trained and equipped to work safely in trees.

Good tree care is an investment that has many benefits that can add significant value to your property. The following link has more great tree care tips: www.isa-arbor.com.

Some trees, especially native oaks, are protected and permits are required for pruning and removal. Check your local ordinances *before* you work in native trees.

With more frequent droughts and new tree pests, good tree care has never been more important than it is today. By hiring a certified arborist you can ensure that your trees will provide benefits for many generations.

Trees should never be topped! Topping stresses trees, facilitates decay in branches, and creates significant hazards that could cause great harm to life and property. For more info visit www.urbantree.org/topping.asp.

Sponsored by



JULY 2015

Sunday	Monday	Tuesday	Wednesday	Thursday	Friday	Saturday
JUN 2015 S M T W T F S 1 2 3 4 5 6 7 8 9 10 11 12 13 14 15 16 17 18 19 20 21 22 23 24 25 26 27 28 29 30	AUG 2015 S M T W T F S 1 2 3 4 5 6 7 8 9 10 11 12 13 14 15 16 17 18 19 20 21 22 23 24 25 26 27 28 29 30 31		1	2	3	4
5	6	7	8	9	10	11 Independence Day
12	13	14	15	16	17	18
19	20	21	22	23	24	25
26	27	28	29	30	31	

STAY FIRE SAFE



PROTECT YOUR HOME FROM WILDFIRES

Tips

If you live in a fire hazard area, learn how to create fire resistant structures and maintain a defensible space around your home. Visit www.ucanr.org/sites/SAFElandscapes for more info.

When landscaping, consult with your local fire department to make sure that your plant selection and spacing are fire safe.

Regularly clean debris from your roof and gutters to keep blowing embers from igniting structures.

Minimize flammable plants from within 30 feet of your house. Maintain individual trees and shrubs to keep them free of dead wood.

Create space between trees and shrubs located within 30-100 feet of your structure (200 feet if your local fire department requires it). Visit firecenter.berkeley.edu resources for more tips.

Start a local Fire Safe Council for your community to educate residents on how to protect their homes and neighborhoods from wildfire. Learn more about how you can join the over 100 Fire Safe Councils at www.cafiresafecouncil.org.



Sponsored by

AUGUST 2015

Sunday	Monday	Tuesday	Wednesday	Thursday	Friday	Saturday
JUL 2015 S M T W T F S 1 2 3 4 5 6 7 8 9 10 11 12 13 14 15 16 17 18 19 20 21 22 23 24 25 26 27 28 29 30 31	SEP 2015 S M T W T F S 1 2 3 4 5 6 7 8 9 10 11 12 13 14 15 16 17 18 19 20 21 22 23 24 25 26 27 28 29 30					1
2	3	4	5	6	7	8
9	10	11	12	13	14	15
16	17	18	19	20	21	22
23	24	25	26	27	28	29
30	31					

SHARE THE HARVEST



GARDENS CREATE COMMUNITY

Tips

Buy local California produce when possible. Shipping food great distances has significant costs to the environment. A great way to support local agriculture is to patronize your local farmers market, visit localharvest.org to find the closest one to you!

Plant hardy fruit trees requiring less than three hundred chill hours to ensure a bountiful harvest. Visit davewilson.com for more information.

Replace unused lawn with planter beds or an orchard for growing fresh fruit and vegetables. If you live in an apartment or have limited space, find a community garden. For a list of community gardens in your area, visit the Los Angeles Community Garden Council website: www.lagardencouncil.org.

Share and trade your harvest with neighbors. Contact groups like Food Forward to donate surplus fruits and make a tax deductible donation. Visit www.foodforward.org for more information.

SEPTEMBER 2015

Sunday	Monday	Tuesday	Wednesday	Thursday	Friday	Saturday
AUG 2015 S M T W T F S 1 2 3 4 5 6 7 8 9 10 11 12 13 14 15 16 17 18 19 20 21 22 23 24 25 26 27 28 29 30 31	OCT 2015 S M T W T F S 1 1 2 3 4 5 6 7 8 9 10 11 12 13 14 15 16 17 18 19 20 21 22 23 24 25 26 27 28 29 30 31	1	2	3	4	5
6	7 Labor Day	8	9	10	11	12
13 Rosh Hashanah	14	15	16	17	18	19
20	21	22 Yom Kippur	23 First Day of Autumn	24	25	26
27	28	29	30			

PLANT TREES



CREATE HEALTHY COMMUNITIES

Tips

Plant California native and drought resistant trees, such as beautiful coast live oaks. Fall is an especially good time to plant native trees.

Large native trees reduce your energy use when planted on the west and south sides of your home. Cool your house with shade trees!

Nurture young trees! The first few years of a tree's life are critical to the future of a healthy tree. Young trees need a deep watering once a week and mature trees every couple of weeks during the dry season. Some trees, however, go dormant

in the summer and like reduced summer water. For more information on tree water needs visit: www.selectree.com.

A properly planted and cared for tree will live for many years, some for over 100 years. Visit the Urban Tree Foundation for more info and tree care tips at www.urbantree.org.

Sponsored by



LOS ANGELES CENTER FOR URBAN
NATURAL RESOURCES SUSTAINABILITY

OCTOBER 2015

Sunday	Monday	Tuesday	Wednesday	Thursday	Friday	Saturday
SEP 2015 S M T W T F S 1 2 3 4 5 6 7 8 9 10 11 12 13 14 15 16 17 18 19 20 21 22 23 24 25 26 27 28 29 30	NOV 2015 S M T W T F S 1 2 3 4 5 6 7 8 9 10 11 12 13 14 15 16 17 18 19 20 21 22 23 24 25 26 27 28 29 30			1	2	3
4	5	6	7	8	9	10
11	12 Columbus Day	13	14	15	16	17
18	19	20	21	22	23	24
25	26	27	28	29	30	31 Halloween

CONSERVE OUR WATER

GROW HEALTHY GARDENS



Tips

Water is a precious resource, so don't spray your pavement and always use a broom. Fix leaky faucets and always use a shut-off nozzle attachment on hoses.

You can save on watering in your garden by redirecting your rain gutter downspouts into your garden or into cisterns. Properly stored rainwater can be used to water your garden after the rains stop.

Your lawn might be your biggest water-waster so consider taking advantage of rebates and

replacing your lawn. There are many beautiful alternatives that use much less water, such as drought-tolerant trees and shrubs. Visit www.plantbook.com for a great list of sustainable plants.

When properly used, mulch and compost will reduce the need to water. Mulch or compost fallen leaves also to control weeds and provide nutrients to your plants.

Grow fruits and vegetables for edible landscaping. And use mulch and micro irrigation to reduce the amount of water that fruit and vegetables require.

NOVEMBER 2015

Sunday	Monday	Tuesday	Wednesday	Thursday	Friday	Saturday
1 <small>Daylight Savings Ends</small>	2	3 <small>Election Day</small>	4	5	6	7
8	9	10	11 <small>Veterans Day</small>	12	13	14
15	16	17	18	19	20	21
22	23	24	25	26 <small>Thanksgiving</small>	27	28
29	30				OCT 2015 <small>S M T W T F S</small> 1 2 3 4 5 6 7 8 9 10 11 12 13 14 15 16 17 18 19 20 21 22 23 24 25 26 27 28 29 30 31	DEC 2015 <small>S M T W T F S</small> 1 2 3 4 5 6 7 8 9 10 11 12 13 14 15 16 17 18 19 20 21 22 23 24 25 26 27 28 29 30 31

GROW NATIVE PLANTS



CELEBRATE CALIFORNIA'S BIODIVERSITY

Tips

Attract bees, birds, and butterflies using native plants. Pollinators love natives like California buckwheat and coyote brush. Native oaks can attract the beautiful California sister butterfly (pictured) and California lilacs will entice swallowtails.

Consider replacing unused lawn with low-growing native grasses and groundcovers, some of which can be mowed to look and function like a lawn.

Most California native plants require little supplemental water, attract beneficial wildlife, and quite a few are easy to purchase at your local nursery! For more information be sure to visit www.cnps.org/cnps/grownative.

Purchase and plant native plants between November and February. This will enable them to develop strong roots before harsh summer conditions.

DECEMBER 2015

Sunday	Monday	Tuesday	Wednesday	Thursday	Friday	Saturday
NOV 2015 S M T W T F S 1 2 3 4 5 6 7 8 9 10 11 12 13 14 15 16 17 18 19 20 21 22 23 24 25 26 27 28 29 30	JAN 2016 S M T W T F S 1 2 3 4 5 6 7 8 9 10 11 12 13 14 15 16 17 18 19 20 21 22 23 24 25 26 27 28 29 30 31	1	2	3	4	5
6	7 <i>First Day of Chanukah</i>	8	9	10	11	12
13	14	15	16	17	18	19
20	21	22 <i>First Day of Winter</i>	23	24	25 <i>Christmas Day</i>	26 <i>First Day of Kwanzaa</i>
27	28	29	30	31		

RECYCLE THE RAIN



SLOW IT, SPREAD IT, SINK IT

Tips

Slow it down, spread it out, and sink it in! Keep storm water from polluting streams and the ocean by creating areas where rainwater can soak into your landscape.

Swales are u-shaped basins in your landscape that capture rain, preventing it from flowing down streets and picking up pollution. Visit the Council for Watershed Health’s demonstration green street and alley at Elmer Avenue for ideas (tinyurl.com/was-elmer-ave).

The first step is to find out if your soils allow water to quickly soak in as you don’t want to create areas of standing water that will breed mosquitos. TreePeople’s website (www.treepeople.org/which-practices-are-you) tells you how.

Be sure to plant your swale with deep-rooted native plants and make sure to apply mulch frequently to build your soil and keep weeds at bay. Once plants have matured, keep them trimmed away from the ground and do your best not to disturb or compact the soils.

JANUARY 2016

Sunday	Monday	Tuesday	Wednesday	Thursday	Friday	Saturday
DEC 2015 S M T W T F S 1 2 3 4 5 6 7 8 9 10 11 12 13 14 15 16 17 18 19 20 21 22 23 24 25 26 27 28 29 30 31	FEB 2016 S M T W T F S 1 2 3 4 5 6 7 8 9 10 11 12 13 14 15 16 17 18 19 20 21 22 23 24 25 26 27 28 29				1	2
3	4	5	6	7	New Year's Day	8
10	11	12	13	14	15	16
17	18 Martin Luther King Jr.'s Birthday	19	20	21	22	23
24	25	26	27	28	29	30
31						

JANUARY - TRADE IN YOUR TURF

**Edible Landscaping by Rosalind Creasy
Surfrider Foundation Ocean Friendly Gardens Program**
www.surfrider.org/programs/entry/ocean-friendly-gardens

Landscape Plants for California Gardens
www.landdesignpublishing.com

**Reimagining the California Lawn: Water-conserving
Plants, Practices, and Designs**
www.cachumapress.com/catalog/california-lawn.html

Surfrider – Ocean Friendly Gardens
www.surfrider.org

FEBRUARY - WORK WITH WATER

Brad Lancaster – Rainwater Harvesting
www.harvestingrainwater.com

Chance of Rain, Emily Green's Water & Gardening Blog
www.chanceofrain.com

**City of Los Angeles Rain Water Harvesting and Low
Impact Development Programs**
www.lastormwater.org

**Green Gardens Group (G3) Los Angeles – Homeowner
Programs**
www.greengardensgroup.com/programs

Natural Resources Defense Council – Rooftops to Rivers
www.nrdc.org/water

Paver Products and Resources
www.paversearch.com

Tree People – Breaking Up is Easy to Do
www.treepeople.org/sustainable-solutions-0

MARCH - PLANT TREES

California ReLeaf
www.californiareleaf.org

Los Angeles "City Plants" Tree Program
www.cityplants.org

National Arbor Day Foundation
www.treesaregood.com

TreePeople
www.treepeople.org

US Forest Service Urban Ecosystems Program
www.fs.fed.us/psw/programs/uesd

APRIL - WATER WISELY

H2OHouse – Smart from the Start
www.h2ouse.org

**Metropolitan Water District - Watering Index and
Calculator**
www.bewaterwise.com

TreePeople – Sustainable Solutions, Sprinklers 101
www.treepeople.org/sustainable-solutions-0

WaterSense – EPA Partnership Program
www.epa.gov/watersense/outdoor/index.html

MAY - INVITE NATURE

***Attracting Native Pollinators* by the Xerces Society**
www.xerces.org

Audubon – Healthy Yards
athome.audubon.org/healthy-yards

California Native Plant Society – Grow Native Program
www.cnps.org/cnps/grownative

Las Pilitas Nursery – Birds and Native Plants
www.laspilitas.com/bird.htm

National Wildlife Foundation – Garden for Wildlife
www.nwf.org/gardenforwildlife

JUNE - REUSE YOUR WATER

CA Plumbing Code (Title 24, Part 5, Ch. 16A, Part I)
www.hcd.ca.gov

Greywater Action
www.greywateraction.org

Greywater Harvesting – Brad Lancaster
www.harvestingrainwater.com/greywater-harvesting

Oasis Design
www.oasisdesign.net

JULY - INVEST IN TREES

ANSI Standards for Tree Care
www.tcia.org/business/ansi-a300-standards

California Urban Forest Council
www.investfromthegroundup.org

International Society of Arboriculture "Find an Arborist"
www.isa-arbor.com

West Coast Arborists
www.westcoastarborists.com

AUGUST - STAY FIRE SAFE

California Native Plant Society – Fire Safety
www.cnps.org/cnps/conservation/resources.php

Center for Fire Research and Outreach
firecenter.berkeley.edu/resources

County of Los Angeles Fire Department Forestry Division
fire.lacounty.gov/forestry-division/forestry-fuel-modification/

California Fire Safe Council
www.cafiresafecouncil.org

UCCE - Sustainable and Fire Safe Landscapes
www.ucanr.org/sites/SAFElandscapes

SEPTEMBER - SHARE THE HARVEST

California Avocado Commission
www.californiaavocadogrowers.com

Food Forward
www.foodforward.org

Los Angeles County Arboretum – Events and Classes
www.arboretum.org

Los Angeles Community Garden Council
www.lagardencouncil.org

Los Angeles Master Gardener Training Program
celosangeles.ucdavis.edu

OCTOBER - BEES ARE BENEFICIAL

American Beekeeping Federation
www.abfnet.org

UC Davis Harry H. Laidlaw Jr. Honey Bee Research Facility
beebiology.ucdavis.edu

The Xerces Society
www.xerces.org

California State Beekeepers Association
www.californiastatebeekeepers.com

NOVEMBER - CONSERVE OUR WATER

Edible Landscaping by Rosalind Creasy
www.rosalindcreasy.com

Los Angeles Master Gardener Training Program
celosangeles.ucdavis.edu

TreePeople – Redirect Rain
www.treepeople.org/redirect-rain-downspouts

DECEMBER - GROW NATIVES PLANTS

California Native Plants for the Garden and Reimagining the California Lawn by C. Bornstein, D. Fross, B. O'Brien
www.cachumapress.com

Care and Maintenance of Southern California Native Plant Gardens by B. Landis, E. Mackey, B. O'Brien
www.cnps.org/store.php

Landscape Plants for California Gardens by Bob Perry
www.landdesignpublishing.com

Plantbook
www.plantbook.com

Rancho Santa Ana Botanic Garden
www.rsabg.org

Theodore Payne Foundation
www.theodorepayne.org

Weeding Wild Suburbia
www.weedingwildsuburbia.com

JANUARY 2016 - RECYCLE THE RAIN

Elmer Avenue Demonstration Green Street
www.tinyurl.com/elmerbrochure

EPA – Water Infrastructure
water.epa.gov/infrastructure

Greater Los Angeles County Vector Control District – Mosquito Tips and Assistance
www.glacvcd.org

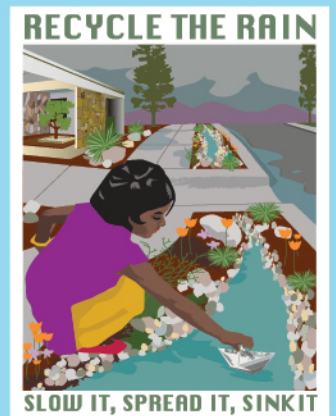
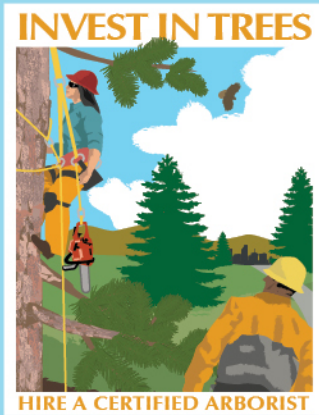
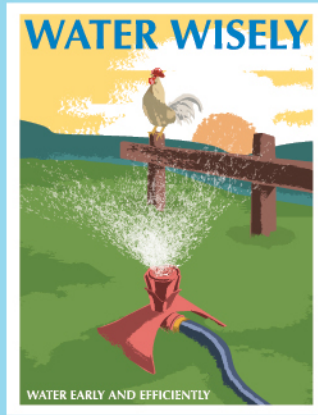
Edward Lum



ARTIST PROFILE

Ed Lum is a talented illustrator and painter whose work is reminiscent of early 20th Century travel posters and the Works Progress Administration (WPA) art of the 1930's. He was born in 1966, is a fourth generation Chinese-American, and works out of his studio at the historic Monterey Trailer Park in Los Angeles.

Check out www.funkyjunkfarms.com to see more of his work. Contact Ed: Edlum711@yahoo.com.



To print this calendar and pass it onto a friend visit www.landscapinglightly.com.
 Questions and correspondence can be sent to info@watershedhealth.org.

