

LA COUNTY
WATER PLAN
TASK FORCE

NATURE

BASED SOLUTIONS

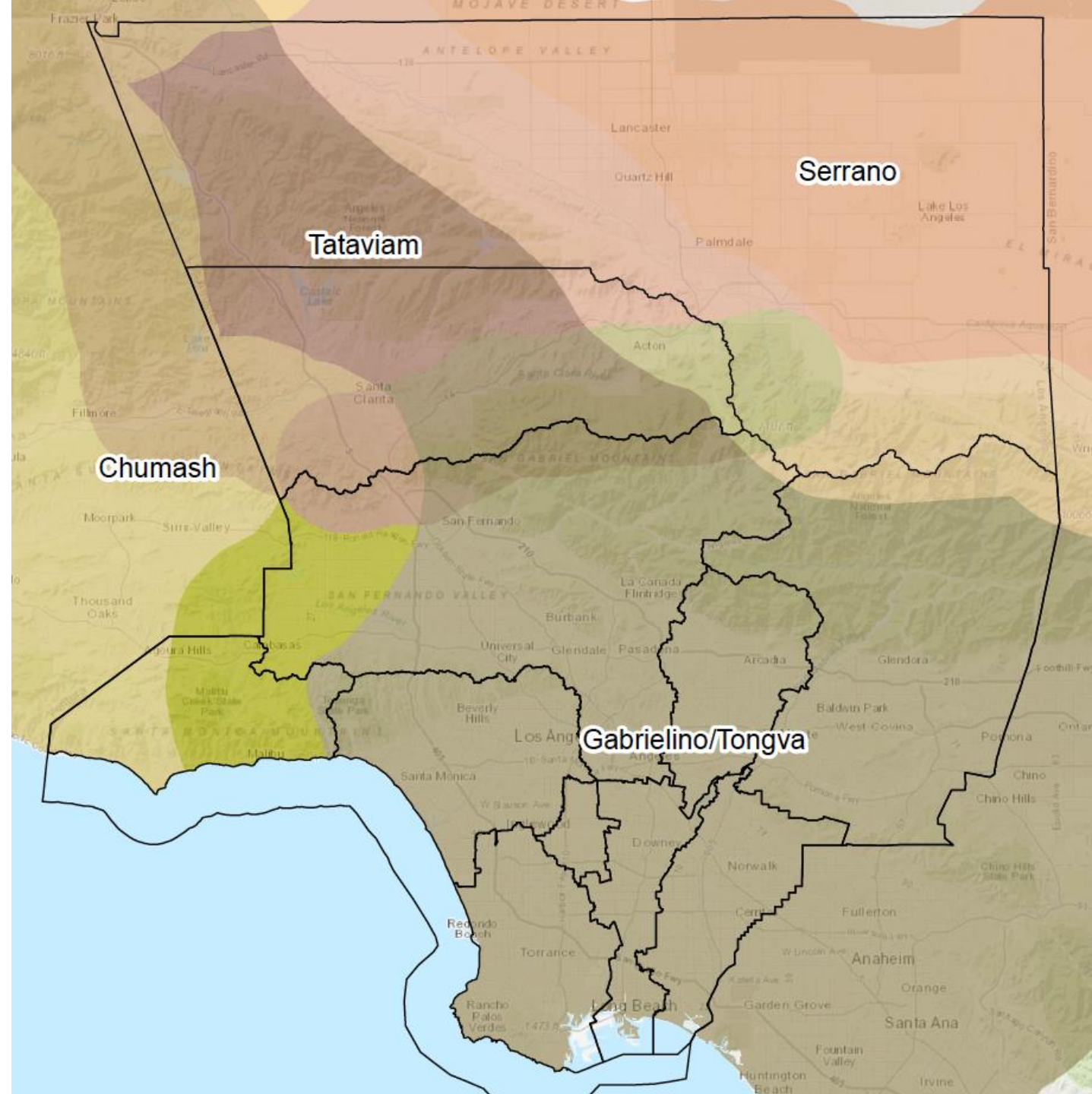
- 2:00-2:20pm **Welcome & Introductions**
A. Task Force Co-chairs and Roles
B. Self-Introductions & Icebreaker
C. Who's missing today: Invited and Suggestions for Additional Contributors/Members
- 2:20-2:35pm **LA County Water Plan Overview**
- 2:35-2:40pm **Nexus with Climate Bond**
- 2:45-3:00pm **Task Force Charter**
A. Vision, Mission & Desired Outcomes
B. Short Term and Long Term Priorities
C. Task Force & Blue Ribbon Panel
- 3:00-3:50pm **Groundwork for the Blue Ribbon Panel**
A. Local, State, Federal, International Initiatives
B. Group Activity & Discussion
- 3:50-4:00pm **Next Steps**

Acknowledgement of Native American Homelands

We acknowledge that we are presently on unceded land of the Gabrielino Tongva, Ventureño Chumash, Gabrielino Kizh, Fernandeno Tataviam Band of Mission Indians, and the San Manuel Band of Mission Indians. We recognize that these Tribes are still present and that they are the original stewards of this land and waters.

We make this acknowledgement out of respect for their long-standing connection to and protection of this area's watersheds.

We honor their elders, both past and present, and their descendants. We have the responsibility to carry out actions in unceded lands that will meaningfully involve citizens of these tribes.



NBS TASK FORCE CO-CHAIRS



COUNCIL FOR
**WATERSHED
HEALTH**

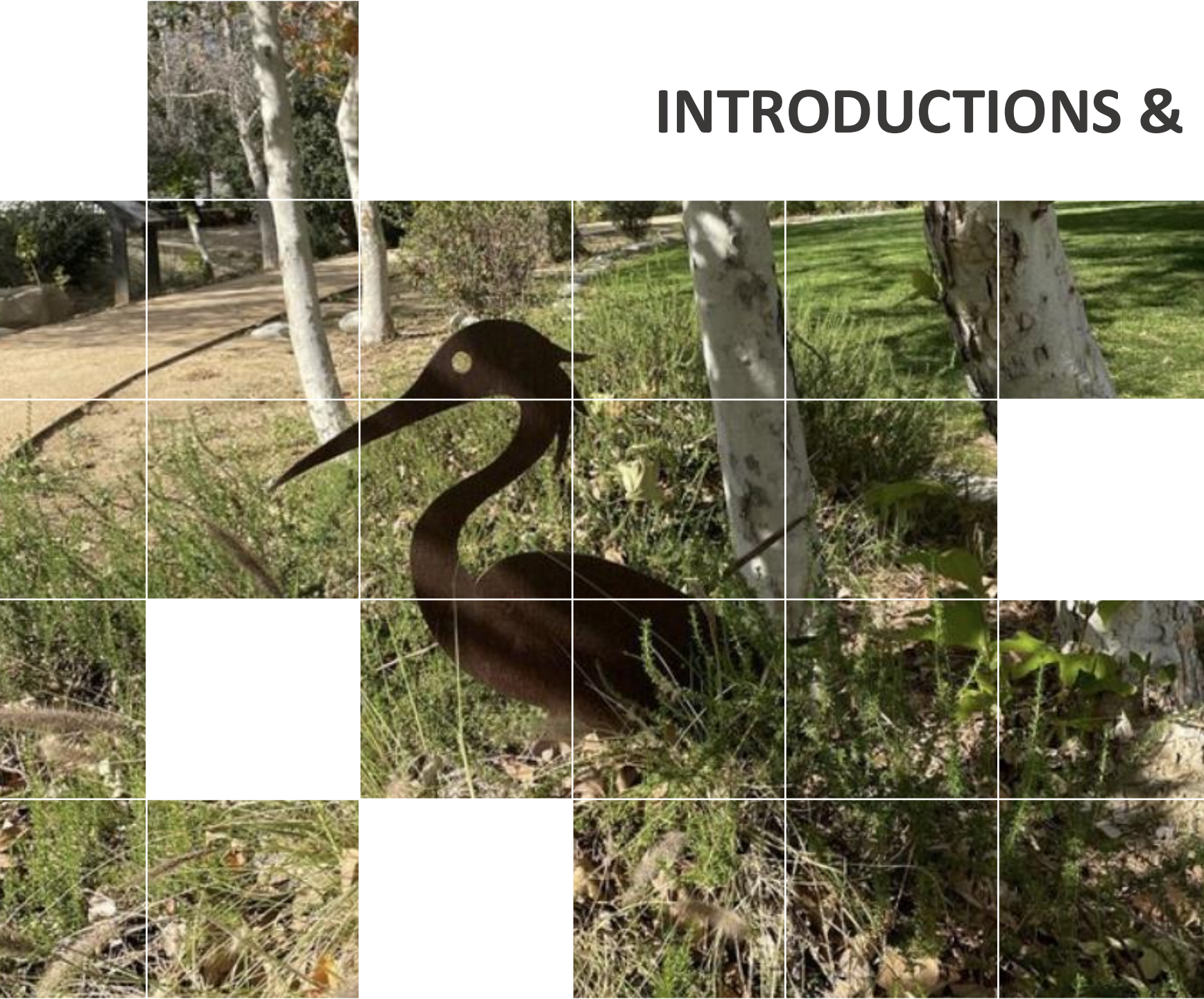
Eileen Alduenda
eileen@watershedhealth.org



Public Works
LOS ANGELES COUNTY

Keith Hala, P.E.
khala@dpw.lacounty.gov

INTRODUCTIONS & ICEBREAKER



- Name & Pronouns
- Affiliation
- Share your favorite indigenous plant or animal

The background of the image is a photograph of a water treatment facility, featuring a large concrete dam or weir with water cascading over it. In the background, there are industrial buildings, a bridge, and some trees. The entire image is overlaid with a semi-transparent dark blue filter.

LACOUNTY WATER PLAN

Nature-Based Solutions Task Force



NbS Task Force Lead

Eileen Alduenda

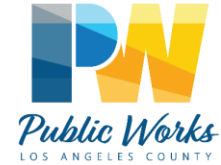
Council for Watershed Health

Vision

An aerial photograph of a long, straight water canal stretching across a landscape. The canal is filled with water that reflects the vibrant colors of a sunset sky, transitioning from deep blue at the top to bright orange and yellow near the horizon. The surrounding terrain is a mix of green fields and residential areas with houses and trees. In the distance, a city skyline is visible under the hazy glow of the setting sun.

The CWP articulates a shared, inclusive, regional path forward to sustainably and equitably achieve safe, clean, and reliable water resources for Los Angeles County.

Resilience Through Collaboration



4 Key Focal Areas

REGIONAL WATER
SUPPLY RELIABILITY



GROUNDWATER
MANAGEMENT AND
QUALITY



SMALL, AT-RISK SYSTEM
RESILIENCE AND DRINKING
WATER EQUITY



WATERSHED
SEDIMENT MANAGEMENT





Water Resiliency Summit – April 29, 2024

4 CWP Task Forces



Water Use Efficiency & Communication

Charley Wilson

Southern California Water Coalition



Nature-Based Solutions

Eileen Alduenda

Council for Watershed Health



Regional Water Reliability

David Pedersen

Las Virgenes Municipal Water District



Small, At-Risk Water Systems

Adam Ariki

Los Angeles County Public Works

Shared Strategies



STRATEGY 10

Facilitating natural infiltration of precipitation

NbS Task Force Mission

Implement **Priority Tasks** from
the CWP 2-Year Action Plan



To implement priority tasks from the CWP 2-Year Action Plan to support the use of nature-based water management solutions across the County to improve the health of communities and ecosystems.

Desired Outcomes



Increase groundwater recharge and storage by increasing decentralized infiltration by 80,000 AFY

Metric: Average annual countywide AFY of groundwater recharge outside of existing and future facilities/spreading grounds



**Keep
in
touch!**

Eileen Alduenda
Executive Director
Council for Watershed Health

LACountyWaterPlan.org

LACountyWaterPlan@pw.lacounty.gov

Keith Hala, P.E.
Senior Civil Engineer
Los Angeles County Public Works
Office: (626) 458-7141

NEXUS WITH CLIMATE BOND

Safe Drinking Water, Drought, Flood, and Water Resilience – \$3.8 billion (Chapter 2)

- \$40M for projects that improve the climate resiliency or the protection of the Los Angeles River Watershed or are consistent with the Lower Los Angeles River Revitalization Plan.
- \$40M for projects that improve the climate resiliency or the protection of the Los Angeles River Watershed and are a part of the revitalization plan developed by the Upper Los Angeles River and Tributaries Working Group pursuant to the Los Angeles River Master Plan.

Protect Biodiversity and Accelerating Nature-Based Climate Solutions – \$1.2 billion (Chapter 6)

- \$48,000,000 to the Baldwin Hills Conservancy to reduce the risks of climate change impacts and increase public access.
- \$48,000,000 to the San Gabriel and Lower LA Rivers and Mountains Conservancy to reduce the risks of climate change impacts and increase public access.
- \$48,000,000 to the Santa Monica Mountains Conservancy to reduce the risks of climate change impacts and increase public access.
- \$22M to the Wildlife Conservation Board for projects for climate change adaptation improvements to protect, conserve, and restore the health and resilience of the southern Ballona Creek Watershed.

TASK FORCE CHARTER

Goals

1. Develop Countywide consistent definitions and specific standards for nature-based solutions.
2. Develop strategies for prioritizing nature-based solutions (NBS) in stormwater capture projects.
3. Build upon the Safe, Clean Water Program (SCW Program)'s [Metrics & Monitoring Study](#) and [2022 Interim Guidance](#) to refine scoring criteria for the SCW Program.

TASK FORCE CHARTER

Priorities

Short Term - Definitions/Standards and Strategies Report to LA County Board of Supervisors

Long Term - Roll out definitions/standards to other Task Forces; support the refinement of NBS SCWP scoring criteria

TASK FORCE CHARTER

Blue Ribbon Panel

BRP CO-CHAIRS:

Eileen Alduenda – CWH | **Bruce Hamamoto** – LACDPW | **Bruce Reznik** - LA Waterkeeper

Kelsey Jessup – Nature Conservancy | **Rudy Ortega** - Fernandeno Tataviam Band of Mission Indians

Participation requirements: up to 50 hrs next 3.5 months

Diverse representation: affiliation, subject matter experts, geographic perspective

20 maximum

COUNTY WATER PLAN SUMMIT

NBS Breakout Session

“Biodiversity should be front and center since it means nature is working.”

“A definition of nature-based solutions is necessary, especially in legal framework. Nature-based solutions restore and regenerate instead of depleting nature. It is a circular economy.”

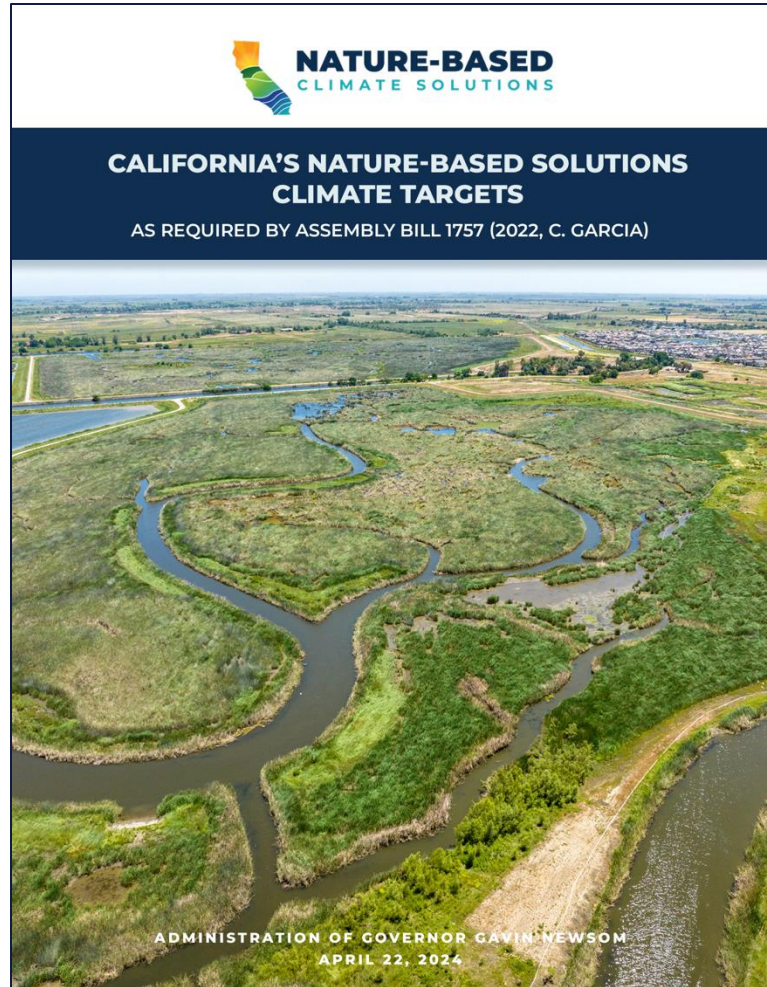
“We need to look within Los Angeles County’s standards. What is in place that is hindering nature-based solutions? Perhaps there are some things that need to be dismantled before progress can be made.”

“Recommend looking outside of the SCWP.”

“We should think about ecosystems that are scattered across the County and restore historic ecosystems.”

“The backbone of steps should be restoration and growing native plants so that the ecosystem can be restored.”

STATE INITIATIVES



CHAPTER 83

An act to add Division 50 (commencing with Section 90000) to the Public Resources Code, relating to safe drinking water, wildfire prevention, drought preparedness, and clean air, by providing the funds necessary therefor through an election of the issuance and sale of bonds of the State of California and for the handling and disposition of those funds, and declaring the urgency thereof, to take effect immediately.

[Approved by Governor July 03, 2024. Filed with Secretary of State July 03, 2024.]

LEGISLATIVE COUNSEL'S DIGEST

SB 867, Allen. Safe Drinking Water, Wildfire Prevention, Drought Preparedness, and Clean Air Bond Act of 2024.

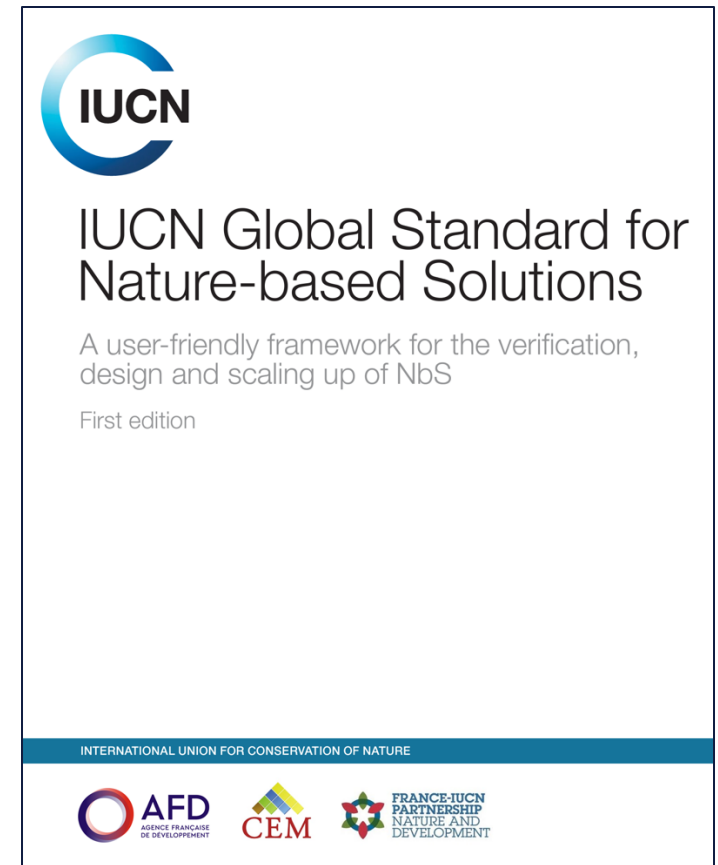
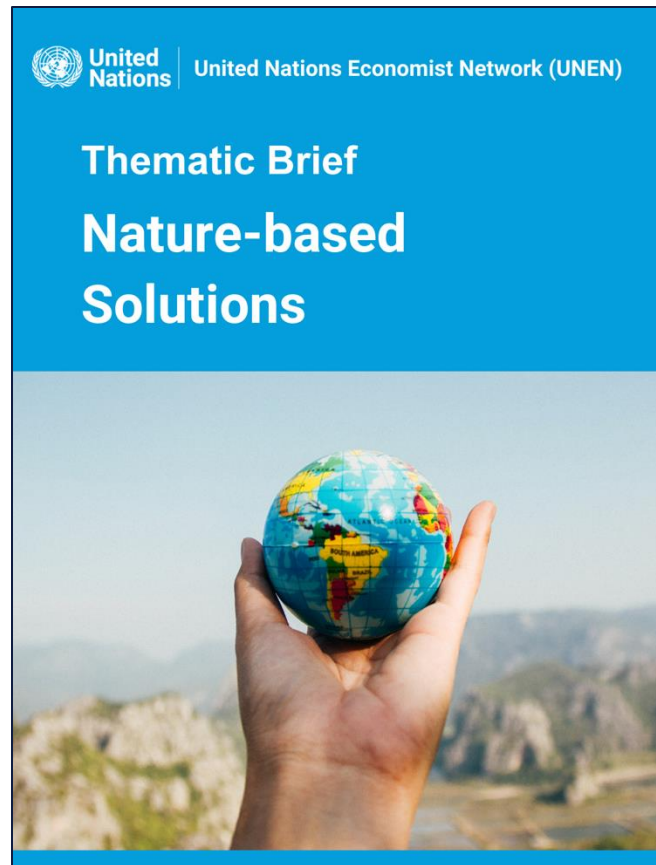
The California Drought, Water, Parks, Climate, Coastal Protection, and Outdoor Access For All Act of 2018, approved by the voters as Proposition 68 at the June 5, 2018, statewide primary election, authorizes the issuance of bonds in the amount of \$4,100,000,000 pursuant to the State General Obligation Bond Law to finance a drought, water, parks, climate, coastal protection, and outdoor access for all program. Article XVI of the California Constitution requires measures authorizing general obligation bonds to specify the single object or work to be funded by the bonds and further requires a bond act to be approved by a $\frac{2}{3}$ vote of each house of the Legislature and a majority of the voters.

Prop 4 is essential to ensure clean drinking water and clean air for California and prevent the worst effects of wildfires, floods and droughts. By supporting Prop 4, we are investing in a resilient future for our state.

MIKE SWEENEY

Executive Director of TNC CA

FEDERAL INITIATIVES



GROUP ACTIVITY

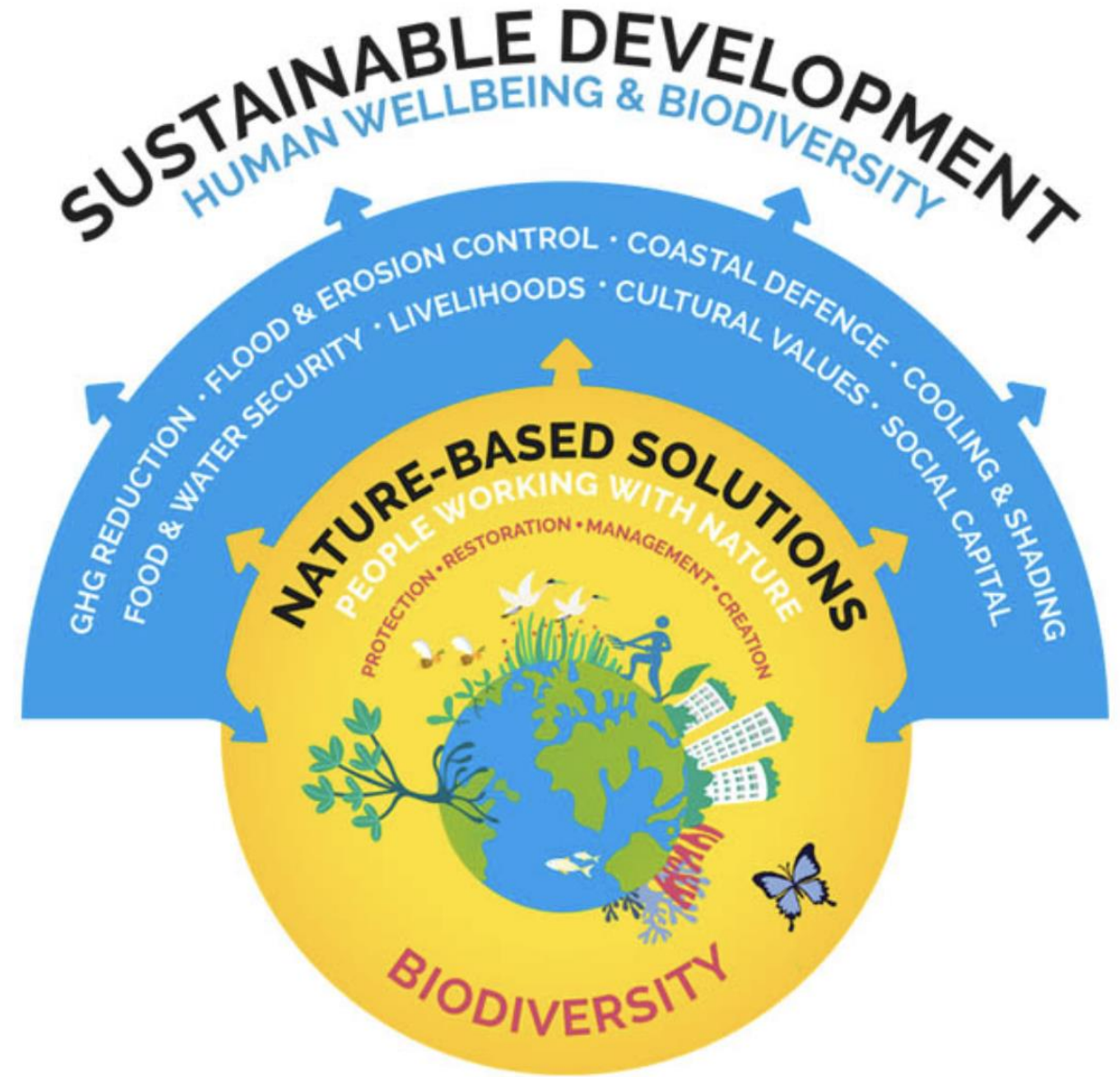
Do you agree that for a solution to be classified as NbS that it must have net benefits that preserve, restore, or meaningfully enhance **biodiversity**? Yes or No, and why?

What is your impression of what is working with Nature Based Solutions regionally? (ex: current SCWP projects)

What if anything is lacking with Nature Based Solutions regionally and what recommendation(s) do you have?

IUCN DEFINITION

“NBS are actions to protect, sustainably manage, and restore natural and modified ecosystems in ways that address societal challenges effectively and adaptively, simultaneously providing human well-being and biodiversity benefits”



SOCIETAL CHALLENGES ADDRESSED BY NBS



Climate change mitigation and adaptation



Disaster risk reduction



Economic and social development



Human health



Food security



Water security



Environmental degradation and biodiversity loss

IUCN NBS CRITERIA

1. NbS effectively address societal challenges.
2. Design of NbS is informed by scale.
3. **NbS result in a net gain to biodiversity and ecosystem integrity.**
4. NbS are economically viable.
5. NbS are based on inclusive, transparent and empowering governance processes.
6. NbS equitably balance trade-offs between achievement of their primary goal(s) and the continued provision of multiple benefits.
7. NbS are managed adaptively, based on evidence.
8. NbS are sustainable and mainstreamed within an appropriate jurisdictional context.

BLUE RIBBON PANEL CHALLENGE

*IUCN: “**Nature-based Solutions** are actions to protect, sustainably manage and restore natural and modified ecosystems in ways that address societal challenges effectively and adaptively, to provide **both** human well-being and biodiversity benefits”*

*SCWP: **Nature-Based Solution** means a Project that utilizes natural processes that slow, detain, infiltrate or filter Stormwater or Urban Runoff.*

*These methods **may** include: relying predominantly on soils and vegetation; increasing the permeability of Impermeable Areas; protecting undeveloped mountains and floodplains; creating and restoring riparian habitat and wetlands; creating rain gardens, bioswales, and parkway basins; and enhancing soil through composting, mulching, and planting trees and vegetation, with preference for native species. Nature-Based Solutions **may** also be designed to provide additional benefits such as sequestering carbon, supporting biodiversity, providing shade, creating and enhancing parks and open space, and improving quality of life for surrounding communities. Nature-Based Solution includes Projects that mimic natural processes, such as green streets, spreading grounds and planted areas with water storage capacity.*

FUTURE MEETINGS

Blue Ribbon Panel - Participant Commitment - In Person Meeting

- **Working Session 1** - Sept 24 or 25 - NbS Definition & Standards
- **Working Session 2** - October 22 or 23 - Strategies & Measures
- **Working Session 3** - November 12 or 13 - Recommendations for SCWP
- **Submit Full Draft** - November 26 or 27
- **Submit Final Report** - December 12
- **LACBOS Meeting** - December 3rd or December 17

Task Force - Feedback - Virtual Meeting

- **Report out on Session 1** - October 22 or 23 - NbS Definition & Standards
- **Report out on Session 2** - November 12 or 13 - Strategies & Measures
- **Report out on Session 3** - November 19 or 20 - Recommendations for SCWP

THANK YOU!

www.lacountywaterplan.org

www.watershedhealth.org/nbs

Contact: LACountyNBS@watershedhealth.org